

SOLARLOGIC

User's Manual for SLIC Generation II

Fred Milder and Bristol Stickney

27 June 2012

User's manual for the SolarLogic Integrated Control (SLIC), a complete control system for 'Solar Combisystems' with multiple heat sources and multiple heat loads.



USER'S MANUAL FOR THE SOLARLOGIC SLIC GEN II

TABLE OF CONTENTS

User's Instructions - SolarLogic SLIC Gen II with VSLIC Software	5
Figure 1: SLIC Gen II Control Box.	5
Manual Heating Control Using Room Thermostats	6
Figure 2: SolarLogic Room Thermostat.	6
Components Required for Network Access and Full Control	6
The SLIC Gen II Boots Up Running	7
VSLIC Software for Full Access and Adjustment	7
Install and Run the VSLIC Software	8
Login, Connect, Adjust and Logout using VSLIC Software	8
Figure 4: VSLIC Screen Display Sequence During Login	9
Adjusting a SLIC using the VSLIC Software - 'Adjust/Save' Button, 'Revert' Button	10
Time-Out Fail-Safe Feature	10
VSLIC Controls are Grouped Together by Tabs	10
'Dashboard' Tab	11
Room Thermostat Dashboard Display	11
Domestic Hot Water (DHW) Dashboard Display	11
Solar Available Dashboard Display	11
Dashboard Display Indicator Lights and Whole House Mode	11
Figure 4: VSLIC 'Dashboard' Tab Screen Display	12
'Detail' Tab (Detailed System Status)	13
Figure 5: VSLIC 'Detail' Tab Screen Display	13



‘History’ Tab	13
Energy Usage	13
Figure 6: VSLIC ‘Energy Usage’ Tab Screen Display	14
Parameter Profiles	14
Figure 7: VSLIC ‘Parameter Profiles’ Tab Screen Display	15
Log Access	15
Figure 8: VSLIC ‘Log Access’ Tab Screen Display	16
‘Zones’ Tab	16
Figure 8: VSLIC ‘Indoor Zones’ Tab Screen Display	16
Indoor Zones	17
Domestic Hot Water (DHW) Minimum	20
Figure 11: VSLIC ‘DHW Minimum’ Tab Screen Display	20
Setback Groups	20
Figure 12: VSLIC ‘Setback Groups’ Tab Screen Display	21
DHW Recirculator	21
Figure 13: VSLIC ‘DHW Recirculator Tab’ Screen Display	22
‘System’ Tab	22
What to do if there is a problem.	23
Technical Appendices	24
CONTROL SETTINGS AND DISPLAYS – SUMMARY TABLES	25
DASHBOARD – Described in the User’s Manual Main Section.	25
DETAIL – Described in the User’s Manual Main Section.	25
ENERGY USAGE	25
PARAMETER PROFILES	26



LOG ACCESS	27
INDOOR ZONES	28
POOL/SPA	29
ICE MELT ZONES	30
DHW MINIMUM	31
SETBACK GROUPS	32
DHW RECIRCULATOR	33
SOLAR AVAILABLE	34
DOMESTIC HOT WATER	36
STORAGE OUT (1)	38
STORAGE OUT (2)	39
PANELS	40
COMMUNICATION	41
PIPING DIAGRAM – TYPICAL PIPING CONFIGURATION BLOCK DIAGRAM	42
CONNECTOR BOARDS WIRING – SUMMARY TABLES	43
INPUT BOARD	43
INPUT DIAGRAM	44
INPUT LIST	45
OUTPUT BOARD	47
OUTPUT DIAGRAM	48
OUTPUT LIST	49
Glossary of Terms	50



USER'S INSTRUCTIONS - SOLARLOGIC SLIC GEN II WITH VSLIC SOFTWARE

The SLIC (SolarLogic Integrated Controller) is a combination hardware/software system controller typically installed to control "Solar Combisystems". These are heating systems that have several different heat sources that all provide heat to many different end-uses. The SLIC replaces all conventional controls, adds intelligent logic, and provides a host of internet-delivered benefits such as remote monitoring, diagnostics, data logging, and remote system operation over the internet. The SLIC uses a file with instructions provided by the SolarLogic Assisted Solar Heating Design (SLASH-D) software for information about the heating system, so it starts-up knowing exactly how to operate the system, eliminating the need for programming and lengthy set-up procedures.



FIGURE 1: SLIC GEN II Control Box.

The SolarLogic Integrated Control (SLIC) is typically installed to control all the heating equipment in a solar heated home.

MANUAL HEATING CONTROL USING ROOM THERMOSTATS

The SLIC Gen II system can be operated by the occupants of the building without computer access, using only the room thermostats provided by SolarLogic. Any occupant can turn the knob on thermostat up or down to increase or decrease the target temperature in that heating zone. Also, the switch at the bottom of the thermostat can be set by any occupant to Solar Only, Normal or Auxiliary mode.

Solar mode prevents that zone from being heated with backup fuel unless it is in danger of freezing (below 45F), and uses only solar heat to try to meet the target temperature indicated by the knob. Normal mode allows the solar heat to be used to meet (or exceed by a few degrees) the target temperature set by the knob, and uses backup fuel only to meet the minimum target temperature when solar heat is not available. Aux mode (auxiliary heat) forces the backup heat to maintain the target temperature very closely in that zone without regard to the availability of solar heat (but still allows the use of solar heat when available).



FIGURE 2: SOLARLOGIC ROOM THERMOSTAT.

COMPONENTS REQUIRED FOR NETWORK ACCESS AND FULL CONTROL

To gain full access and control over the SLIC Gen II heating system control functions, the following steps must have been completed by the installer:

1. A SLIC Gen II control system is installed and properly connected to all the heating system components (see Figure 1);
2. A local network router is properly connected to the SLIC control box via a hardwire connection (Figure 3); and
3. A computer running VSLIC software (supplied with the SLIC installation – see below) is also connected to the network or to the internet.

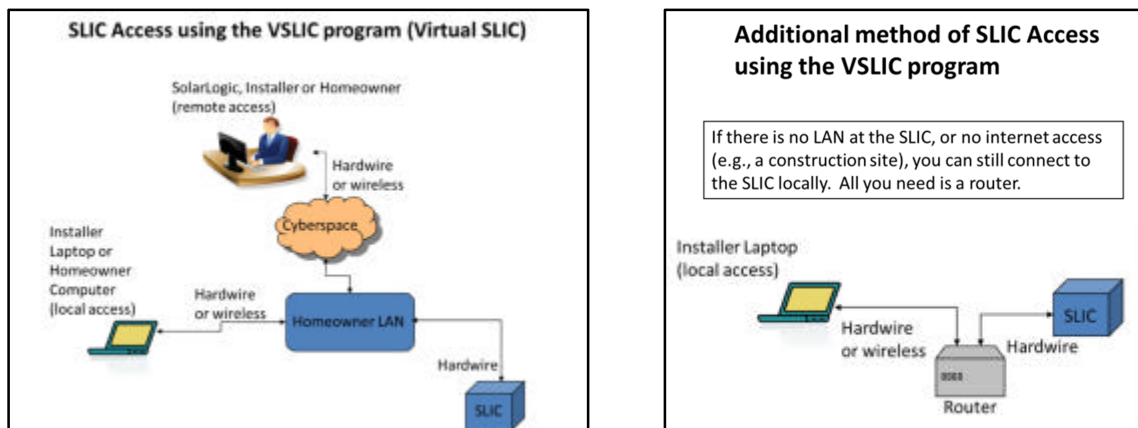


Figure 3: Diagram of Network Connectivity. The complete heating system installation includes a SLIC control box with a hardwire network (LAN) connection and a computer on the same LAN with VSLIC software installed on the computer. The minimum requirement for the LAN is a router that assigns DHCP IP addresses. To have remote access to the SLIC from outside the LAN, the LAN must be connected to the internet.

THE SLIC GEN II BOOTS UP RUNNING

When the SLIC control system is properly installed and powered on, it boots up like any computer. It 'wakes up' running the heating system for the house and begins normal operation by reloading all the required data and settings from permanent files. This happens automatically any time power is restored for any reason (following a power failure, maintenance shutdown, etc.). Thus, any setting that has been saved after it was last adjusted is reloaded upon reboot. When power is restored and boot-up is complete, all room thermostats, pumps, zone valves and sensors become fully operational, even without any computer or network connection. Note, this means that although a LAN and/or internet connection is necessary for full monitoring and adjusting parts of the SLIC system, once it is set up, no LAN or internet is required for proper functioning of the heating system.

VSLIC SOFTWARE FOR FULL ACCESS AND ADJUSTMENT

The SLIC control box does not contain any user adjustments or displays. This is because it is designed for access using a computer over a network. Each SLIC is connected to a Local Area Network (LAN) and can be monitored and adjusted by VSLIC software (see below) from any computer on that network. If the LAN is connected to the internet, the same VSLIC software may be used for remote operation over the internet as well.

The software program called Virtual SLIC.exe (aka. VSLIC) is provided by SolarLogic and presently runs only on Windows based PCs. (Future updates will be compiled for other operating systems.) This software can be installed on multiple computers at any network location (local or remote) and used to monitor and adjust the SLIC system from different locations. Typically the installer, several occupants and SolarLogic may be granted access from different network computers. Access to an installed SLIC is controlled by a combination of the VSLIC software, the SolarLogic central server and the SLIC itself through user IDs and passwords. More than one user can be logged on to a SLIC at the same time. This feature makes it possible for the system owner and the installer to collaborate in adjusting a system or diagnosing issues



without either being on site. It also facilitates communication with SolarLogic technical support and to perform joint work and to diagnose and fix problems on any system.

INSTALL AND RUN THE VSLIC SOFTWARE

The software is provided as an install program in a Windows file folder. To install it, copy (drag) the entire installation file folder onto your computer and then run the 'setup' file within the file folder. Once the installation is complete, the installation file folder can be deleted to save space on your hard drive if you so choose, but will be needed if you want to reinstall the VSLIC at a later time. If you have been provided the VSLIC installer on a portable device, such as a USB drive, the installer can also be run from that medium directly. The setup routine creates a desktop icon and two working folders on your computer: C:\SLIC for data buffering and storage, and C:\program files\SolarLogic for the executable program. (On Windows systems later than XP, the folder 'program files' may have a different name such as 'program files x86'.) The main program is named 'Virtual SLIC.exe' and to run the VSLIC software, double click the desktop icon after it has been installed. A Login Window will appear as seen at the top of Figure 4.

LOGIN, CONNECT, ADJUST AND LOGOUT USING VSLIC SOFTWARE

Connection to a SLIC system is accomplished with the VSLIC software, following Steps 1 through 10 as shown in Figure 4:

1. Startup 'Virtual SLIC.exe' and wait for blank Login screen to appear (on the Communications tab).
2. Type in a previously created Username in the Username box.
3. Tab down to the Password Box and type in the corresponding Password. Press Enter.
4. Wait for the program to search for SLIC control systems and display their Names and ID numbers. The VSLIC searches the SolarLogic central server as well as your local network. The results from the server appear quickly unless there is a problem with your internet connection. For SLICs on your local network, the search can take as much as a minute.
5. Choose the SLIC you want – Click on its name and ID number (it will then be highlighted).
6. Click on the 'Local/Remote' toggle button to change to the type of network connection you prefer. If you only have one connection choice for the desired SLIC, the button will be greyed out and inoperable but will show you the connection mode. In most situations, if a local connection is available, it is preferred, as the interaction with the SLIC will be faster.
7. Click on the 'OK' button to connect.
8. Wait for the VSLIC Dashboard to appear for the chosen SLIC over the chosen network connection.
9. Use the Tabs at the top of the screen to move between other screen displays and controls.
10. To end your connection to a SLIC system, press the 'Logout' button (top right on screen). When the login screen appears in full color again, you may close the program using the top right "X" button.

(Although not recommended, the program can also be ended without logging out by using the 'X' button at the top right at any time; and, as with any program on a Windows machine, if closing the program is problematic for some reason, pressing the 'Control-Alt-Delete' keys will take you to the 'Task Manager' where any program can be forced to quit.)

At any time while interacting with a SLIC, if adjustable controls and buttons appear in grey ('greyed out'), they are not available to the current user either because they do not exist in the plumbing configuration being accessed, or the current user does not have the password authority to access these features. The Tabs and control functions mentioned in 'Step 9' are explained in more detail below.



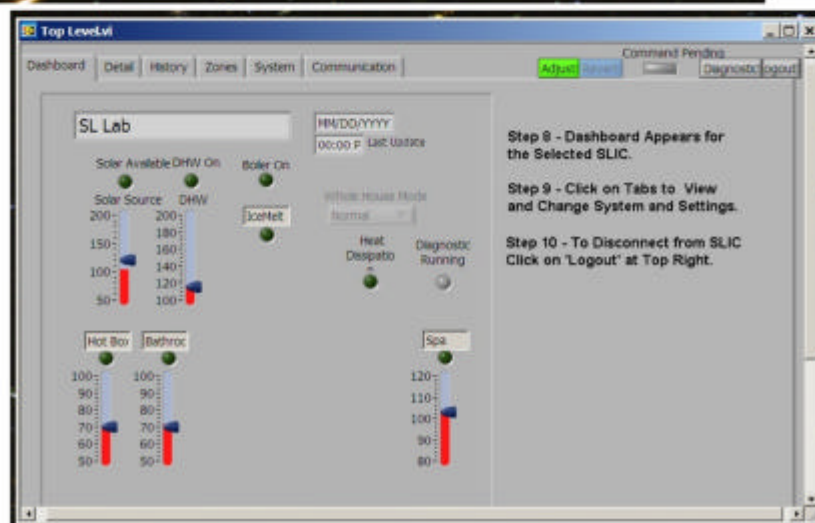
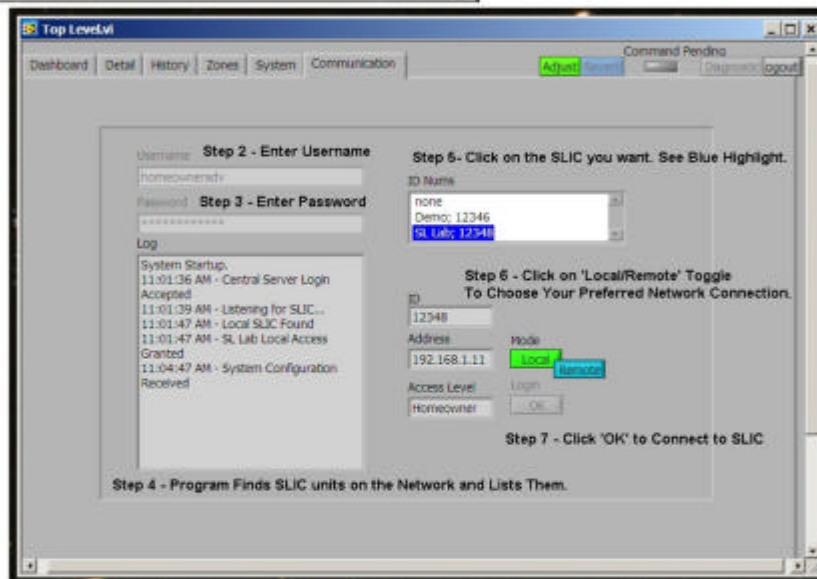
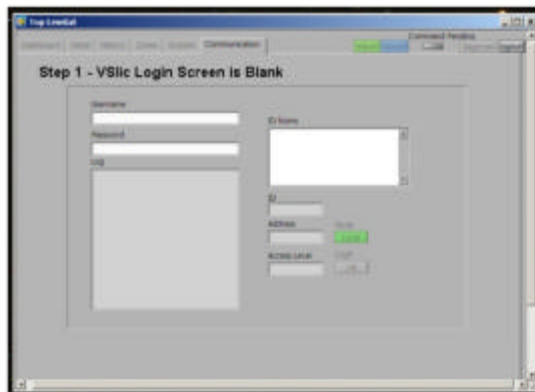


FIGURE 4: VSLIC SCREEN DISPLAY SEQUENCE DURING LOGIN

ADJUSTING A SLIC USING THE VSLIC SOFTWARE - 'ADJUST/SAVE' BUTTON, 'REVERT' BUTTON

The VSLIC software is configured to prevent accidental adjustment of heating system parameter values, so when a user wants to change the heating system settings, the 'Adjust' button must be pressed first. The button label changes to 'Save' and changes from green to red. A new value can now be typed into any setting that is not "greyed out". Typically, the settable controls appear as numbers on a white background with increment/decrement buttons next to the control. The notable exceptions are the pull down controls and some of the sliders that go from greyed out to full color but do not turn white. Whenever a control parameter is changed, it turns yellow and the tab name gets an asterisk. If the tab you are working on is a sub-tab, its "parent" tab also gets an asterisk. In this way, you can relocate and know which parameters you are in the process of changing at any time during an adjustment procedure. A discussion of the various parameters of interest to the system owner

After you have made changes to as many parameters as you wish, click the 'Save' button. A dialog box appears, allowing a review all of the changes. Accept them by 'Sending' the command, or return to the adjustment procedure by 'Canceling'. No changes are made to the actual SLIC that you are logged onto until the command has been sent. Once Send has been selected in the confirm dialog box, changes can only be undone by readjusting them back to their old values. However, if during your adjustment procedure you wish to cancel all of the adjustments in process before you get to the confirming dialog box, you can click on the 'Revert' button. This will undo all of the changes made from the time you activated the 'Adjust'.

TIME-OUT FAIL-SAFE FEATURE

The VSLIC software is also designed to prevent unexpected or unwanted heating system performance due to human neglect or inattention after the adjust button has been pressed. Thus, if the operator is called away or forgets that the VSLIC is running with the adjust button pressed, the VSLIC will reset the adjust button to "off" and revert all parameters to their last saved values after a period of approximately 15 minutes. (The SLIC controller which the VSLIC is logged onto continues normal heating system operation using the last settings that were saved normally by the user because it has not received a command to change them.)

VSLIC CONTROLS ARE GROUPED TOGETHER BY TABS

The VSLIC software displays information in groups that are accessible by clicking the Tabs at the top of the screen. There are six main categories and these Tabs are labeled:

- Dashboard,
- Detail,
- History,
- Zones,
- System, and
- Communication.

(There are also a 'Diagnostics' button and a 'Reboot' button that allow a qualified Installer to access controls for maintenance and troubleshooting and to reboot a SLIC remotely. Owners do not have access to these functions.)



In this section we will only be describing the information and adjustable parameters on each screen that are useful to the homeowner. There are system parameters on other and several screens discussed here that are available only to the installer and SolarLogic, and used only when fine tuning of the system to maximize your energy savings or to better match the system performance to the living patterns in the building. Information on those parameters is presented in the Technical Appendices.

'DASHBOARD' TAB

The System Dashboard displays a summary of the entire heating system and a sample can be seen in Figure 4. For each major system component a red thermometer and a blue indicator are displayed, as well as a green light indicating if that component is active. The red thermometer shows the current temperature of that component and the blue indicator shows the target temperature. (The colors may vary in your system based on your computer's color scheme.)

ROOM THERMOSTAT DASHBOARD DISPLAY

For all the room zone heat loads and the pool and spa heat loads, the setting indicator shows the Comfort Target (CT). This is the temperature that the system is targeting for that zone. Generally, if there is solar heat available, the system will heat the zone slightly above the CT. If there is no solar heat available, the system will let the zone cool off slightly below the CT before it turns on your auxiliary (fuel-based) heat source. This spread, from slightly warmer to slightly cooler than the CT is called the Comfort Band (CB). The CT is adjusted at the physical thermostat. The CB is adjusted via the VSLIC on the 'Zones' tab, 'Indoor Zones' sub-tab (see later section).

DOMESTIC HOT WATER (DHW) DASHBOARD DISPLAY

For Domestic Hot Water (DHW), the thermometer shows the DHW temperature at the top of the water tank and the setting indicator shows the minimum temperature allowed before the system turns on the auxiliary heat source to generate hot water. The DHW minimum setting is adjusted via the VSLIC on the 'Zones' tab, 'DHW Minimum sub-tab (see later section).

SOLAR AVAILABLE DASHBOARD DISPLAY

For Solar Available, the thermometer shows the temperature of the fluid as it arrives in the house from the solar panels (Solar Source) and the setting indicator shows the temperature at which the system considers that solar heat is available to be used by for zone space heating. The adjustment of the Solar Available setting is for installers and SolarLogic only.

DASHBOARD DISPLAY INDICATOR LIGHTS AND WHOLE HOUSE MODE

The dashboard lights show if there is heat being delivered to any zone, (including ice melt zones, pools or spas if present in the system), whether the boiler is on for auxiliary heat generation, if there is heat dissipation active (to protect the panels from overheating).

The Whole House Mode (WHM) of the system is displayed and selected on the Dashboard. The WHM is set via the VSLIC and functions in the same manner as the three-position switch at the bottom of each thermostat. The WHM on the Dashboard has five modes altogether: Solar, Normal and Auxiliary, similar to the thermostat switches, plus Off and Cooling. Off turns off all space heating zones but does not turn off the DHW heating or the pool and spa heating. To turn off a pool or spa, merely turn the physical thermostat all the way to the left. Cooling mode functions the same as Off mode but adds Night Sky Radiant Cooling (NSRC) for radiant in-masonry zones. See later sections for NSRC. **Any WHM mode other**



than Normal overrides the individual thermostat switch settings, with the exception of the pool and spa noted above.



FIGURE 4: VSLIC 'DASHBOARD' TAB SCREEN DISPLAY

'DETAIL' TAB (DETAILED SYSTEM STATUS)

The system status Detail tab is seen in Figure 5. It shows the on/off status of every heat load, heat source, valve and pump in the entire system, all system level temperatures (i.e., all temperatures except the individual zone temperatures) and additional sensor values if present in the system (AC current draw, pressure, flow, pH). The labels for most items are self-explanatory. There are no adjustable parameters on the Detail tab.

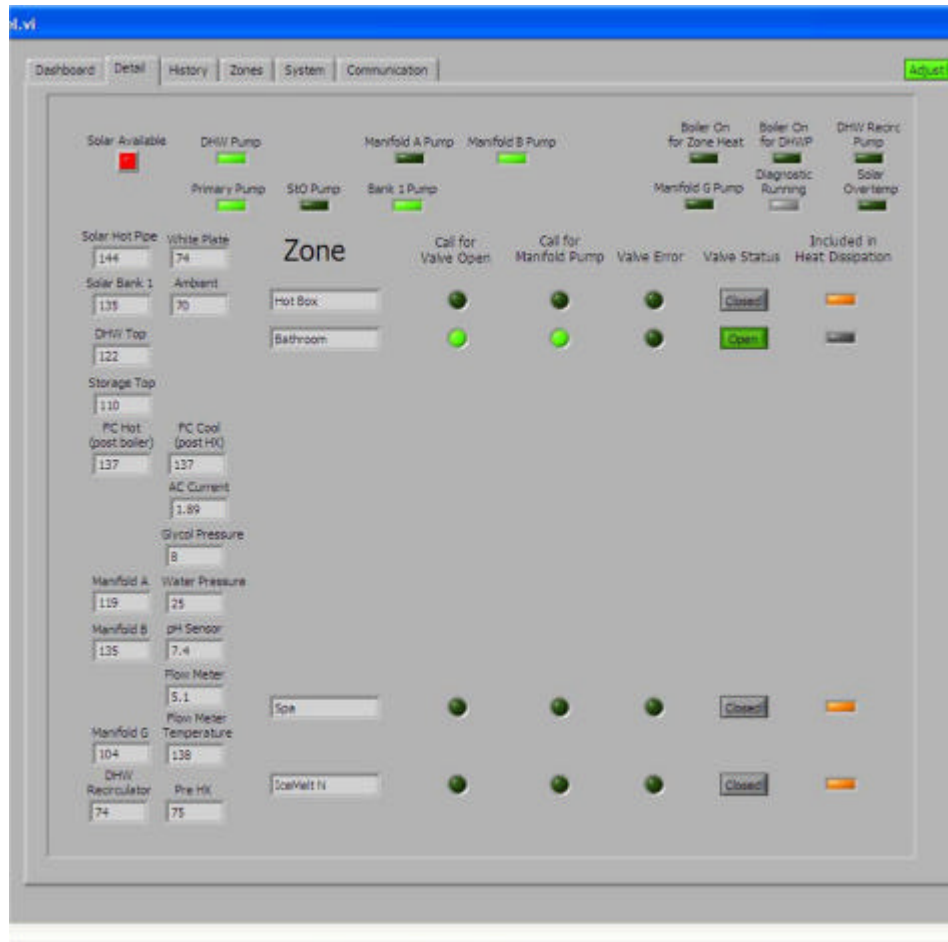


FIGURE 5: VSLIC 'DETAIL' TAB SCREEN DISPLAY

'HISTORY' TAB

The History Tab contains three sub-tabs: Energy Usage, Parameter Profiles and Log Access. These categories are all related to data records and settings that can be saved by the VSLIC program. There are no adjustable parameters on the History tab.

ENERGY USAGE

Summary energy production and usage numbers are calculated and displayed on this sub-tab if the system has the optional energy monitoring package installed. There are three display formats to choose



from: 1) Day by hour. This selection displays either today's or yesterday's energy numbers in an hour by hour format. 2) Year by month. This selection displays one or two years' energy numbers in a month by month format. Any years for which the SLIC has been in operation can be chosen. 3) 15-day Spread. This selection displays daily energy numbers for a 15-day time span centered on a chosen date within the past year in a day by day format.

For any display format, there are seven values which can be displayed as line graphs:

1. Solar In – the total solar heat delivered into the house for DHW, Storage Tank and Central Heat;
2. Outdoor BTUs – the total BTUs delivered from the boiler plus the Storage Tank to outdoor heating zones (but not including the heat delivered directly from the collectors to the outdoor zones);
3. Tank & DHW Cooling – the total BTUs removed from the DHW and Storage Tank for collector overheat buffering;
4. Zone Cooling – the total BTUs removed from the house zones by NSRC;
5. Boiler Output – the total BTUs output by the boiler for making DHW and heating zones (indoor and outdoor);
6. DHW Heating – the net total BTUs (solar plus boiler) delivered to make DHW. Note that this result automatically subtracts the BTUs removed from the DHW tank for the collector overheat buffering noted above (item 3);
7. Central Heating – the total BTUs (solar plus boiler) delivered to indoor space heating zones during the heating seasons.

Note: For any particular system, due to plumbing variations, there may be some energy numbers that are either only rough approximations or not applicable. Consult with SolarLogic to find out which energy measurements are valid for your system.

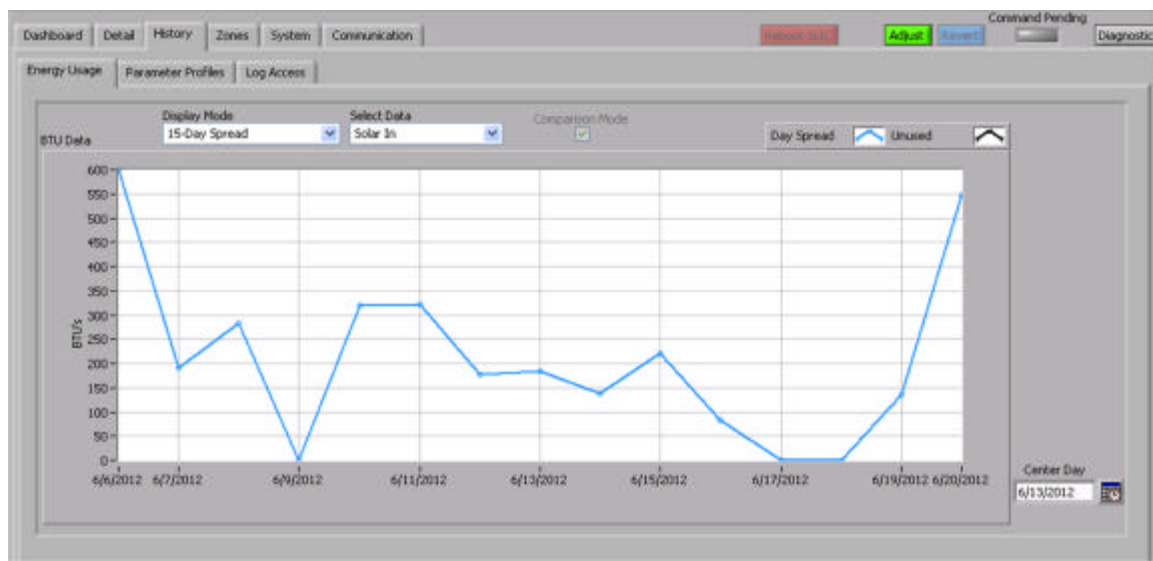


FIGURE 6: VSLIC 'ENERGY USAGE' TAB SCREEN DISPLAY

PARAMETER PROFILES

All the settings in the SLIC can be saved together as a group called a "profile". Profiles can be selected and reinstalled without manually entering each setting individually. Double click on a profile to reload it.



Profile names (user defined) should use only standard alphanumeric characters (A-Z, a-z, 0-9 and spaces). Profiles are most often used in systems where there are seasonally adjusted settings. After a system has been adjusted for a particular season and is running both in an energy efficient manner and in accordance with the owner's preferences, it should be saved as a profile. In following years at that season, reload the saved profile to put the SLIC into the same operating condition. Saving and naming Profiles are self-explanatory via the buttons on the Parameter Profiles sub-tab.

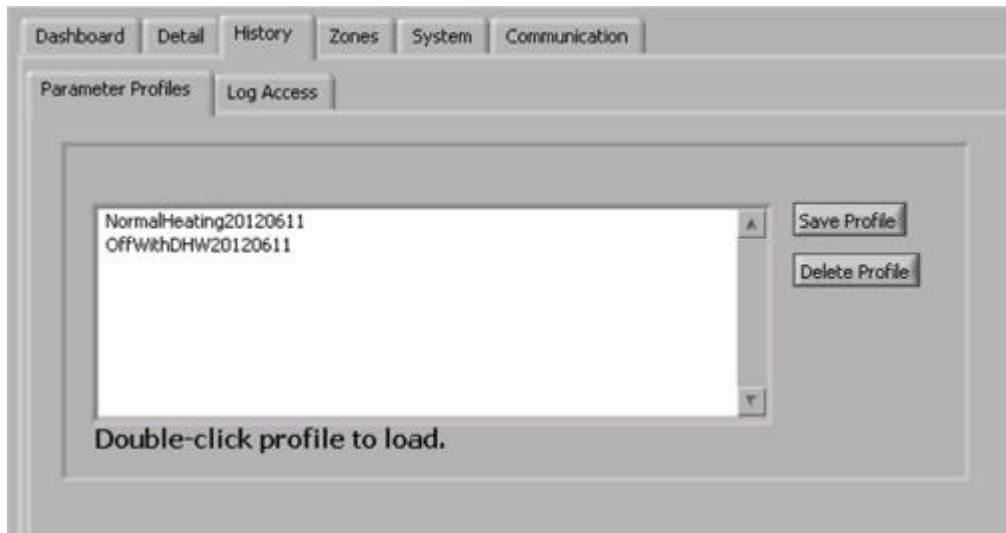


FIGURE 7: VSLIC 'PARAMETER PROFILES' TAB SCREEN DISPLAY

LOG ACCESS

The log files in the SLIC are like the "black box" on an airplane, recording every aspect of the heating system performance for later inspection or analysis. The SLIC records every detail of the system status every 5 minutes in files kept on the SLIC and also uploaded to the SolarLogic Central Server. The user is shown a list of the log files available for viewing and downloading. There is a new file started three times each month, on the 1st, 11th, and 21st of each month. The log files are named according to the date they are started in year-month-day format. Log files can be retrieved from either the SLIC or from the central server by double clicking on the log file name. The files are saved on the local computer (the one running the VSLIC) in a spreadsheet format. The spreadsheet can later be used to draw graphs or do calculations when inspecting the heating system performance.

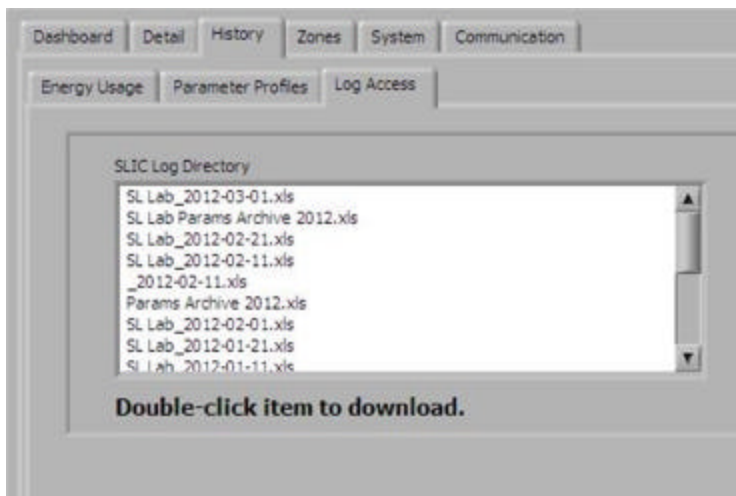


FIGURE 8: VSLIC 'LOG ACCESS' TAB SCREEN DISPLAY

'ZONES' TAB

The Zones Tab is where the detailed settings are located for all the heating loads, which are grouped into six sub-tabs;

- Indoor Zones,
- Pool/Spa,
- Ice Melt Zones,
- DHW Minimum,
- Setback Groups, and
- DHW Recirculator.

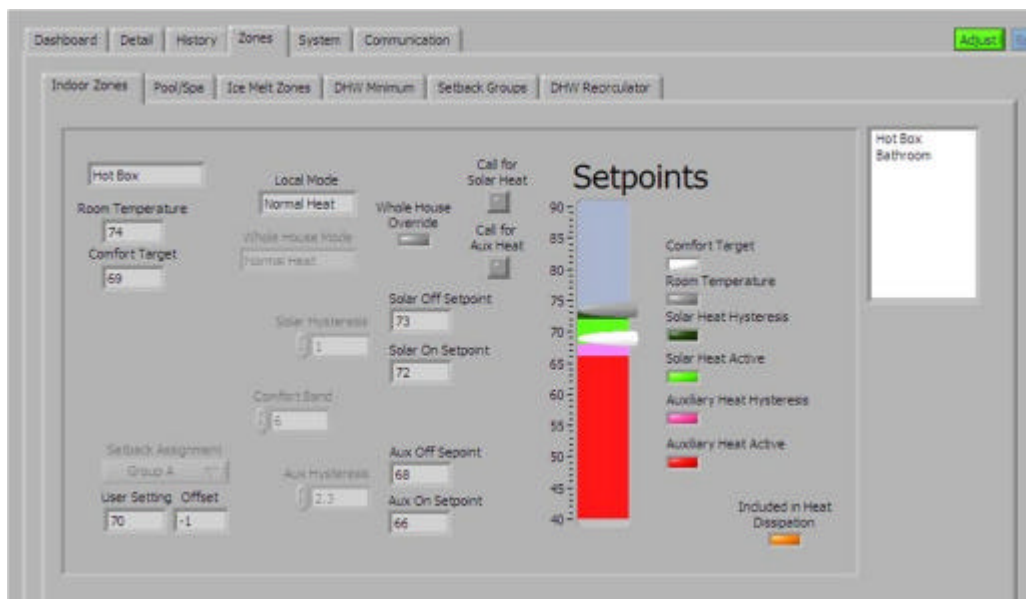


FIGURE 8: VSLIC 'INDOOR ZONES' TAB SCREEN DISPLAY

INDOOR ZONES

ROOM THERMOSTAT CONTROL – 2-STAGE HEATING

Each Room Heating Zone screen shows the detail status and settings of its zone. The current zone displayed is selected in the list box on the right side of this screen. The overall settings are a result of the settings of the physical thermostat in the zone and the software settings on this screen and on the Setback Groups tab. The operation of the SLIC zone heating system is referred to as 2-stage heating: solar heat and auxiliary heat. Two-stage heating is done to maximize the energy savings provided by your SolarLogic heating system. The two main control parameters of 2-stage heating are the Comfort Target (CT) and the Comfort Band (CB). The CT is set at the physical thermostat in the zone – what one normally thinks of as the thermostat setting. The CB is set in software from this screen. In general, the homeowner will not be adjusting the CB, and will use the CT setting on the physical thermostat just like any normal thermostat. On the thermometer on this screen, the current zone temperature and the CT are indicated. The Comfort Band setting appears in a box to the left of the thermometer.

HOW THE COMFORT TARGET AND COMFORT BAND CONTROL 2-STAGE HEATING

The Comfort Target is just that – it is a target for the heating system. You should not expect the temperature in the zone to spend most of its time at the CT. The Comfort Band in combination with the CT quantifies where you should generally find the zone temperature. When solar heat is available, the system will continue to put heat into the zone until it is approximately at the temperature of $CT + \frac{1}{2} CB$. If there is no solar heat available, the system will let the zone cool off until it is approximately at $CT - \frac{1}{2} CB$ before it turns on your auxiliary heat source. For example, if the CT is 68F and the CB is 6F, the system will put solar heat into the zone until it goes slightly above 71F; and it will not turn on the auxiliary heat until the zone is below 65F.

On the screen display, the light and dark green regions on the thermometer are where only solar heat is active, the top of the dark region showing where the solar heat will turn off. The dark red region is where the auxiliary heat will turn on, and it will stay on until the zone temperature is above the pink region. Additionally for further energy savings, if solar heat is available to heat the zone, the SLIC system can be set to not turn on auxiliary heat even if the zone is in the red region. This parameter (found on the System tab, Solar Available sub-tab) is set by your installer and the default is to NOT allow the auxiliary heat to come on regardless of the temperature in the room if solar heat is available.

For further energy savings and comfort, the default settings of the SLIC give priority solar heat to any zone that is in the red region. Example: If zone 2 is in the red region and zone 1 is in the green region and solar heat is available, the SLIC will preferentially send solar heat to zone 2 and turn off heat delivery to zone 1 until zone 2 comes out of the pink region.

THERMOSTAT MODES

Lastly on this screen, the operating mode of the zone is displayed. The available modes are: Normal Heating, Solar Only, Auxiliary, Off and Cooling. The mode being used is normally set by the three position switch at the bottom of the zone thermostat for Normal, Solar Only and Auxiliary. However, via the VSLIC software a Whole House Mode (WHM) can also be set. If the WHM is set to any mode other than Normal Heating, it overrides the local switch settings of all of the physical zone thermostats. Off and Cooling can only be set as a Whole House Mode.



Room Heat Operating Modes:

NORMAL HEAT – Operation is as described above in the discussion of 2-stage heating.

SOLAR ONLY – Turning on of the auxiliary heat is prevented unless there is risk of freezing in the zone (i.e., the zone temperature drops below 45F). This mode is particularly useful to save fuel costs during the Fall and Spring or for a room rarely used in the winter. The mode is also useful for a vacation home not occupied for extended periods in the winter.

AUXILIARY – Affectionately called “grandmother mode,” this mode turns on the auxiliary heat when the room drops only slightly below the CT. It is for when you want a room to always stay near or above the CT, as when granny visits and complains about keeping the house so cold just to save a little energy. This mode is also useful for rewarming the house more quickly in preparation for occupancy if the house has been in Solar Only mode. Note however that this mode will burn fuel to achieve that result except when there is solar heat available during the daytime.

OFF – Turns off all space heating zones but does not turn off the DHW heating or the pool and spa heating. The Off Mode is set by the Whole House Mode on the Dashboard tab.

COOLING – Your SolarLogic heating system provides Night Sky Radiant Cooling (NSRC, sometimes referred to just as “radiant cooling”) during the summer months for almost no additional cost. Cooling Mode is a Whole House Mode where heat is taken out of the floors at night and sent off into the sky via your collectors or special radiant cooling panels. In Cooling Mode during the day, solar and backup heat is delivered normally to the DHW, spa and pool heat loads. An effective NSRC system can lower the masonry floor temperature by several degrees overnight and save air conditioning costs or provide cooling if there is no air conditioning. The NSRC function is controlled by the Whole House Mode and the local thermostats in combination. First, the WHM must be set to Cooling; second, only those zones with their physical thermostat switches set to Solar will receive NSRC. This is so you can prioritize where the radiant cooling should be concentrated in the building. **In order to have a room accept radiant cooling, the thermostat switch must be in Solar mode.**

IN COOLING MODE THE THERMOSTAT COLORING LOOKS UPSIDE DOWN FROM THE HEATING MODES. THE COOLING TURNS ON IN THE LIGHT GREEN AREA ANY TIME THE COLLECTORS ARE COOL ENOUGH, AND TURNS OFF WHEN THE ROOM IS COOLED BELOW THE DARK GREEN AREA. The parameters work similarly to the Normal heating mode: The cooling is turned on when the room is above $CT + \frac{1}{2} CB$ (if the panels are cool enough at night) and turned off when the room is below the on setpoint minus the Cooling Hysteresis ($Off\ Setpoint = CT + \frac{1}{2} CB - Cooling\ Hysteresis$). The On and Off Setpoints are displayed on the zone screen. In cooling mode, since there is no auxiliary cooling connected to the SLIC, the Auxiliary parameters are irrelevant and non-functional.



SPA AND POOL ZONES

The spa and pool zones are similar to a room heating zone with a few important exceptions. Most importantly, spa and pool heating are active regardless of the Whole House Mode. **If you want to turn spa or pool heating off, turn the thermostat all the way to its lowest setting (to the left).**

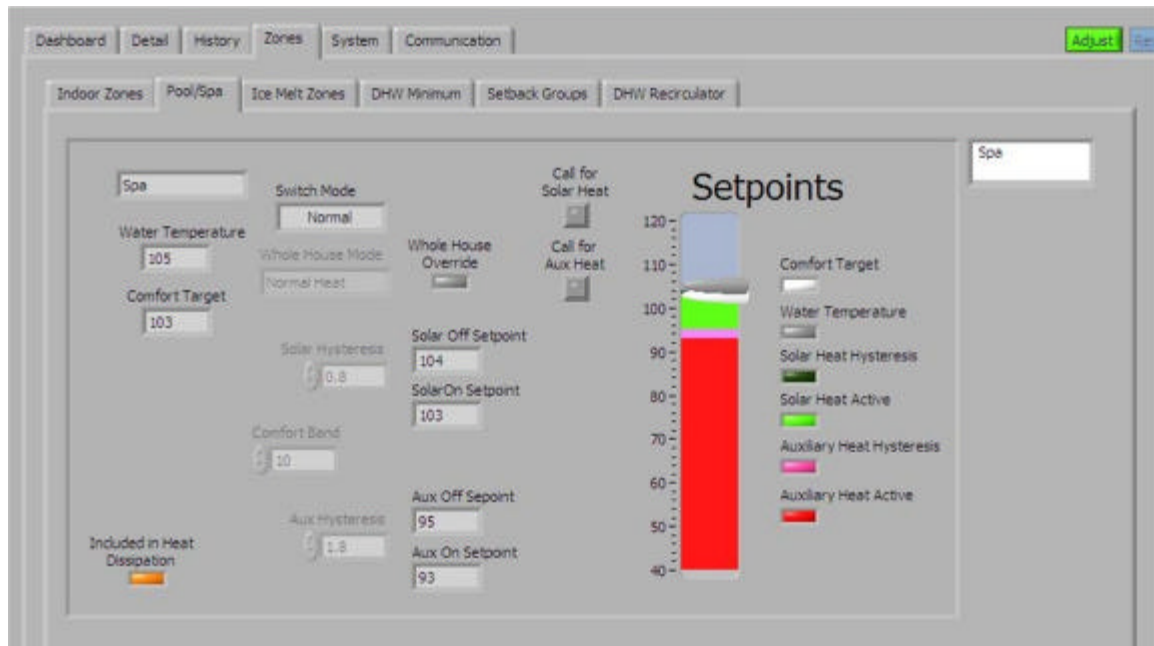


FIGURE 9: VSLIC 'SPA AND POOL ZONES' TAB SCREEN DISPLAY

The other important differences in the spa and pool zones are done to prevent the pool from getting too warm for comfort or the spa getting too hot for safety. First, the system will not heat the spa above approximately 106F regardless of any settings. Second, the temperature at which the auxiliary heat is activated to heat the pool or spa is equal to CT-CB. Third, the system will only allow the pool or spa to get approximately 1 degree hotter than the comfort target, CT. Thus you should set the CT for the pool or spa near the top of the range of temperatures that you would like to use the water feature at.

The Solar Only mode and the Auxiliary mode work similar to the room zones. If you want to save energy and only use free solar heat, set the thermostat to Solar Only mode; if you want the water feature to warm up to near the CT quickly by using back-up fuel if necessary, set the thermostat to Auxiliary mode. Note however that Auxiliary mode can use a lot of backup fuel for heating a pool since the volume of water that must be heated is much larger than for a spa. Neither the spa nor pool participates in Night Sky Radiant Cooling.

ICE MELT ZONES

Ice Melt Zones have two activation methods: a physical timer or other external switch installed for the zone, and a software timer. The Ice Melt Zone screens show which of the activation methods, if any, are currently active. With the VSLIC, you can start up (or stop) an ice melt zone and also set the length of



time the zone is active for the software timer. With an external switch (normally open; close to activate), an ice melt zone is active for as long as the switch is closed. Whenever an Ice Melt Zone is active, it will use both solar and auxiliary heat to melt the snow and ice. Ice Melt Zones are also used for heat Dissipation during the summer.

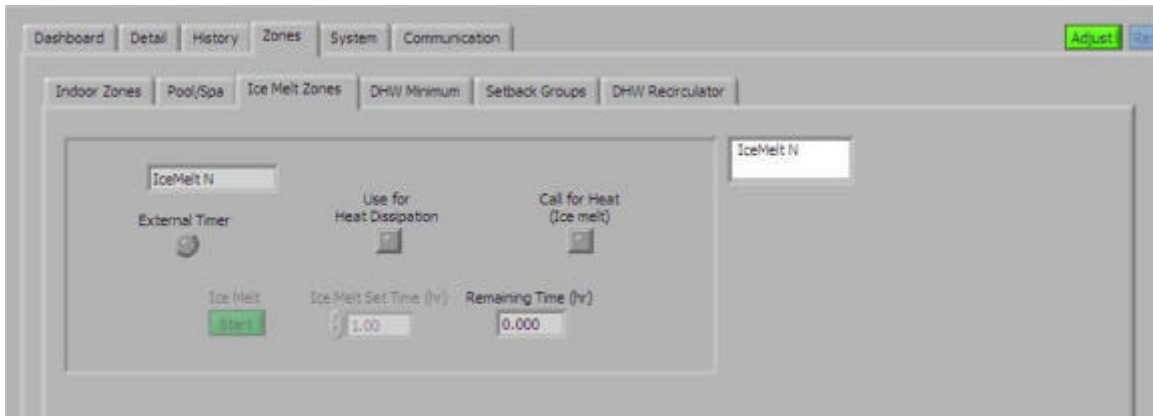


FIGURE 10: VSLIC 'ICE MELT ZONES' TAB SCREEN DISPLAY

DOMESTIC HOT WATER (DHW) MINIMUM

The Domestic Hot Water Minimum tab shows the temperature at which the system will turn on the auxiliary heat source in order to make hot water. This is the same setting that is shown on the Dashboard DHW thermometer and is commonly referred to as the “shower temperature.”

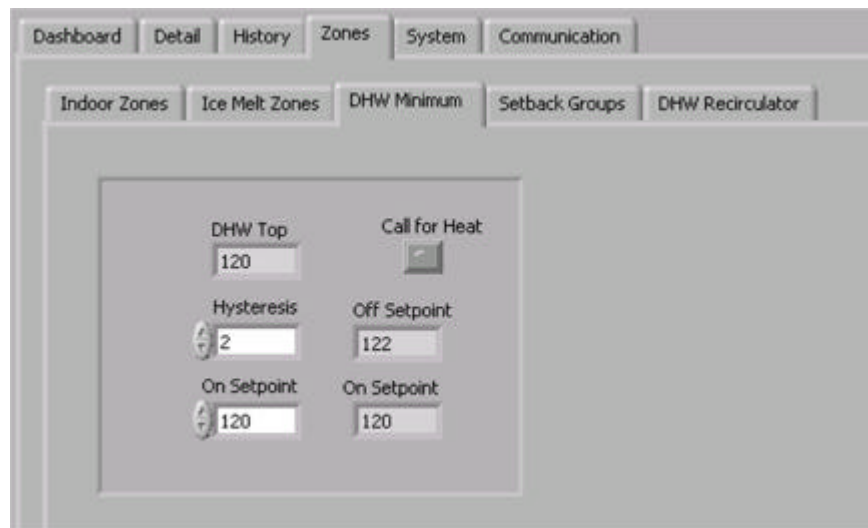


FIGURE 11: VSLIC 'DHW MINIMUM' TAB SCREEN DISPLAY

SETBACK GROUPS

This set of controls allows the user to program the room thermostats for lower settings (setback) at certain times of the day to save energy. Multiple room thermostats may be grouped together to use the



same settings so that each thermostat does not need individual programming. There are three group settings available for any thermostat: Group A, Group B and No Setback, and any number of thermostats may be in a group. When the Group is selected in the upper right list box on the Setback Groups tab, the zones belonging to that Group are highlighted in the Included Zones list box below it. The assignment of a particular zone to a chosen Group is done on thermostat display for that zone on the Indoor Zones tab.

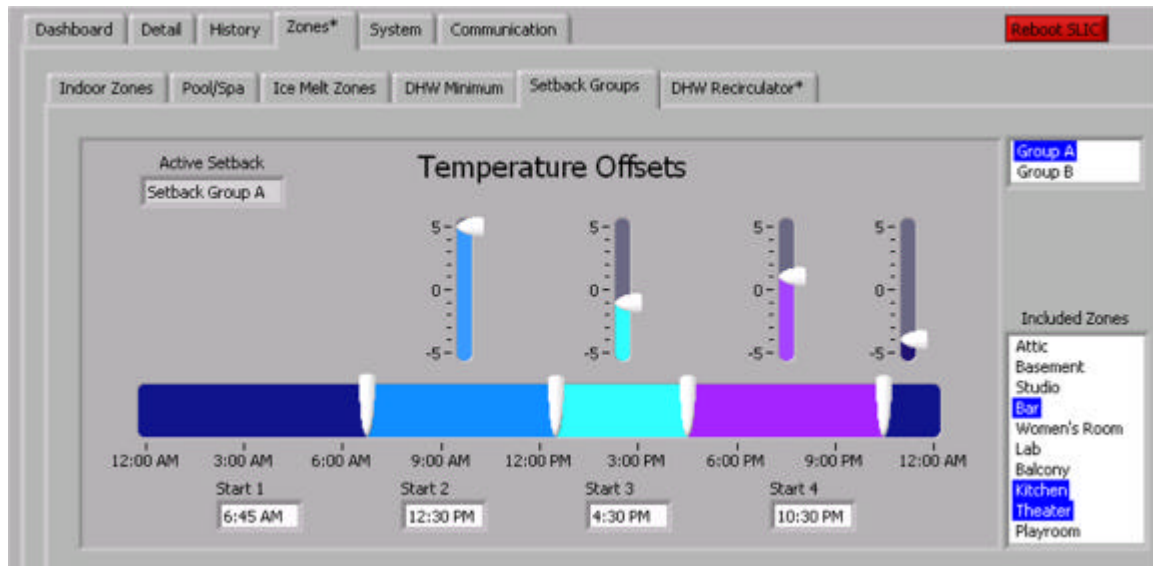


FIGURE 12: VSLIC 'SETBACK GROUPS' TAB SCREEN DISPLAY

The setbacks function as an **offset to the physical thermostat** settings, so that each room is still always under the overall control of the physical thermostat. This allows the user to have on-demand and final control over zone/room temperatures. Looking at the figure above as an example, Group A is chosen and indicates that the Bar, the Kitchen and the Theater are all included in Group A. The offsets for Group A are: +5 from 6:45 AM to 12:30 PM; -1 from 12:30 PM to 4:30 PM; +1 from 4:30 PM to 10:30 PM; and -4 from 10:30 PM to 6:45 AM (next day). Thus for example, if the Bar physical thermostat is set for 70F, the Comfort Target in effect for the Bar will be 75F, 69F, 71F and 66F for the respective time blocks. If the VSLIC is in adjust mode, settings of both the time blocks and the offsets are adjusted by sliding the indicators with the mouse.

DHW RECIRCULATOR

If an "instant hot water recirculator" is installed, this tab allows several kinds of control over the operation of the circulator pump. Pump control settings are available to limit the run-time of the pump based on elapsed time, time of day, return water temperature, a demand-switch signal and combinations of these. There are five modes of operation for the DHW Recirculator: Demand Temperature, Demand Timed, Timer Only, Temperature Only and Timed Temperature.

Demand Temperature: The recirculator pump is started by a remote demand switch. These switches are typically pushbuttons near each sink or motion sensors in the bathrooms and kitchen. The recirculator turns off when the temperature of the water returning to the DHW tank (the "return temperature") goes above the indicated setpoint, guaranteeing that the water at the fixtures is above that temperature. This



mode is the most energy efficient and also saves the most water in areas where water conservation is a concern.

Demand Timed: The recirculator pump is started by a remote demand switch and runs for the number of seconds indicated. This mode is useful if there are multiple recirculator loops in the building connected to one recirculator pump. The run time should be set to allow hot water to get to all fixtures in the building, regardless of which loop they are on or how far from the mechanical room they are.

Timer Only: The recirculator pump runs continuously during the timer period(s) chosen. The timer can be set to have either one or two “on” periods each day.

Temperature Only: The recirculator pump comes on when the return temperature is 10 degrees below the setpoint indicated and turns off when the return temperature goes above the setpoint. This intermittent operation continues 24 hours per day.

Timed Temperature: This mode is a combination of the Timer Only and the Temperature Only modes. During the “on” periods set by the timer (1 or 2 periods) the recirculator pump runs only as much as needed to maintain the setpoint return temperature. During the off periods, the recirculator does not run.

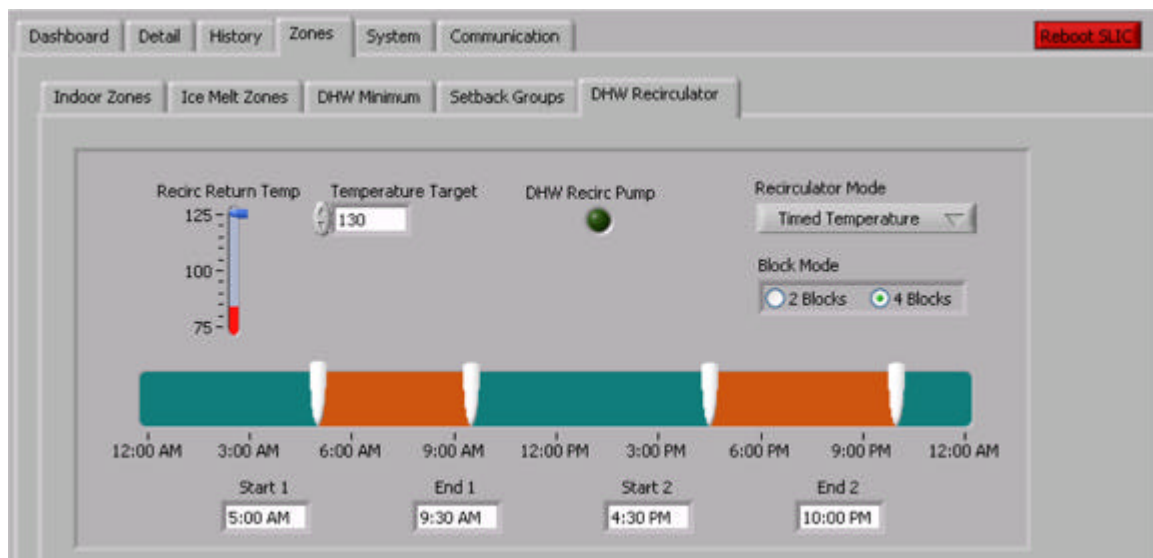


FIGURE 13: VSLIC 'DHW RECIRCULATOR TAB' SCREEN DISPLAY

'SYSTEM' TAB

This is where the detailed settings are located for all the system parameters that control the overall energy management of the heating system. The parameters available for adjustment on the system sub-tabs control priorities of heat sourcing, heat delivery, and owner comfort as well as energy usage optimization and safe operating ranges. These parameters can only be adjusted by an installer or SolarLogic and are 'greyed out' when the homeowner is logged in. System controls are grouped into four sub-categories:

- Solar Available



- Domestic Hot Water
- Storage Out
- Panels.

A summary of the system functions controlled by the System tab and sub-tabs is included in the Technical Appendices.

WHAT TO DO IF THERE IS A PROBLEM.

Your SolarLogic SLIC is designed to be continuously self-checking and self-correcting. However, it is possible that due to a power surge or a malfunction of the software or hardware, you may find the system in a condition that you consider abnormal. Your first task should be to check that you understand how the system is supposed to be operating at that moment and confirm that it is not operating properly. The first check can be to look at the exterior LED on the right side of SLIC. In normal operation, the LED is on for 10 seconds and off for 10 seconds. If this LED is on and off in that pattern, then the software is almost assuredly operating properly.

Further owner exploration can be done by adjusting thermostats, waiting for sunlight (if there is none), or adjusting settable parameters. If you still believe that your system is operating incorrectly, please contact your installer or SolarLogic. Both your installer and SolarLogic can log on to your system over the internet to ascertain if there is a problem and, in most cases, correct it if there is one.

In the event that you cannot contact either your installer or SolarLogic, and you are in a situation where you have either no heat or no hot water, you can reboot the SLIC by unplugging the system for 30 seconds and then plugging it back in. The system will reboot (several minutes), reload the stored parameters and begin running your heating system again. If you do this, please note the approximate time that you perform this extreme measure and be sure to let SolarLogic know that you have rebooted the system because of a suspected malfunction.



TECHNICAL APPENDICES

Detailed summary of technical information for installers and advanced users.

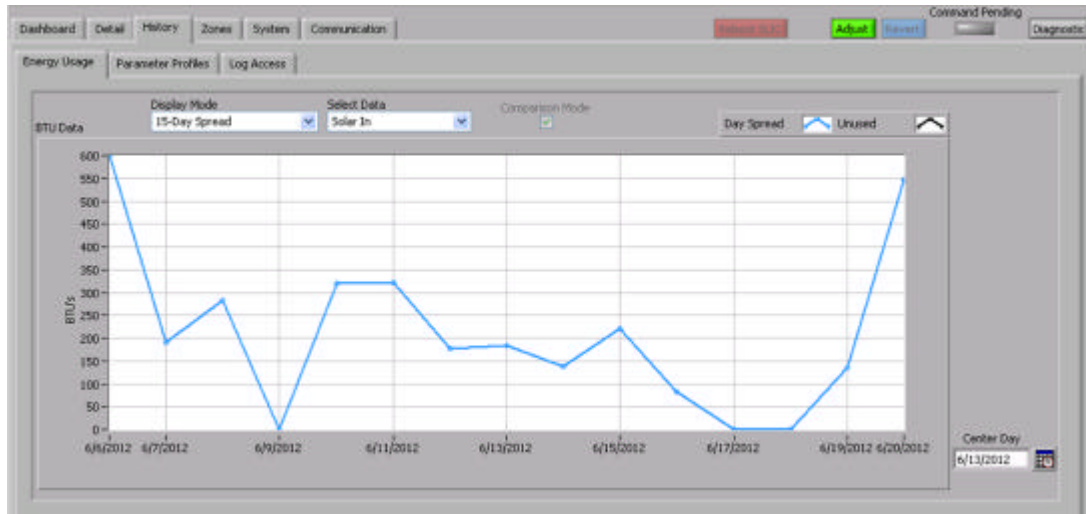


CONTROL SETTINGS AND DISPLAYS – SUMMARY TABLES

DASHBOARD – Described in the User’s Manual Main Section.

DETAIL – Described in the User’s Manual Main Section.

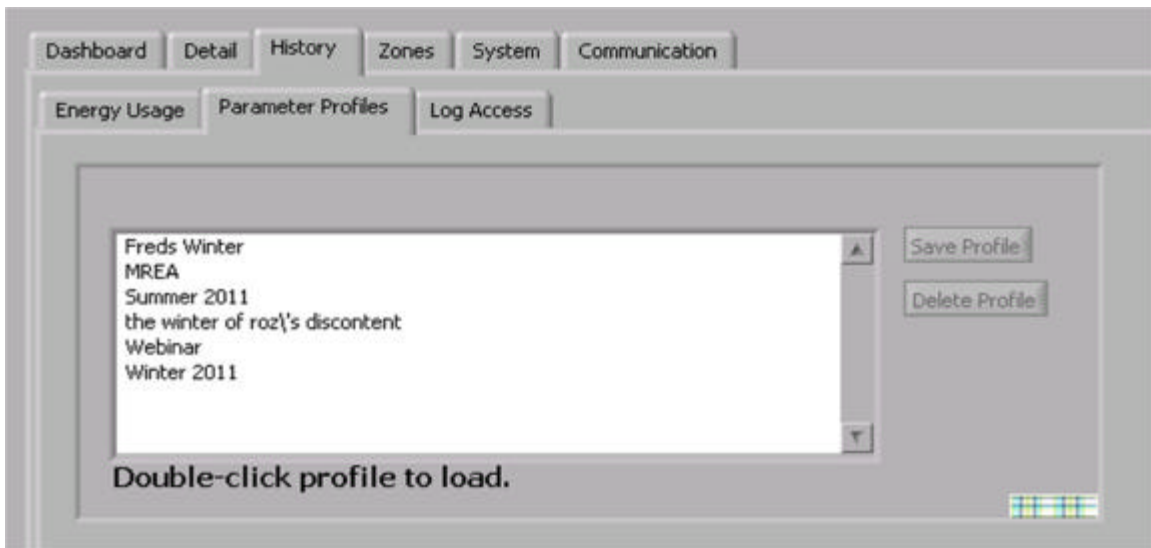
ENERGY USAGE



Tab:	Sub-tab:		
History	Energy Usage	Used to Review Energy Generation and Usage of the System	
Group Label	Button / Selector	Function	Access level required to adjust
none	Graphical Display	Displays result	Calculated
	Display Mode	<p>Selects the time period for the graphical display:</p> <ol style="list-style-type: none"> 1. Day by Hour: Energy results are presented in a 24-hour format for today or for today and yesterday. 2. Year by Month: Energy results are presented in a 12-month format for one or two selected years. 3. 15-Day Spread: Energy results are presented in a day by day format for a 15-day period centered on the selected date. 	Observer
	Select Data	<p>Selects the data to be displayed in the graph:</p> <ol style="list-style-type: none"> 1. Solar In – the total solar heat delivered into the house for DHW, Storage Tank and Central Heat; 2. Outdoor BTUs – the total BTUs delivered from the boiler plus the Storage Tank to outdoor heating zones (but not including the heat delivered directly from the collectors to the outdoor zones); 3. Tank & DHW Cooling – the total BTUs removed from the DHW and Storage Tank for collector overheat buffering; 4. Zone Cooling – the total BTUs removed from the house zones by NSRC; 5. Boiler Output – the total BTUs output by the boiler for making DHW and heating zones (indoor and outdoor); 6. DHW Heating – the net total BTUs (solar plus boiler) delivered to make DHW. Note that this result automatically subtracts the BTUs removed from the DHW tank for the collector overheat buffering noted above (item 3); 7. Central Heating – the total BTUs (solar plus boiler) delivered to indoor space heating zones during the heating seasons. 	Observer
	Comparison Mode	When checked, selects the 2-day format or the 2-year format as appropriate to the display mode.	Observer

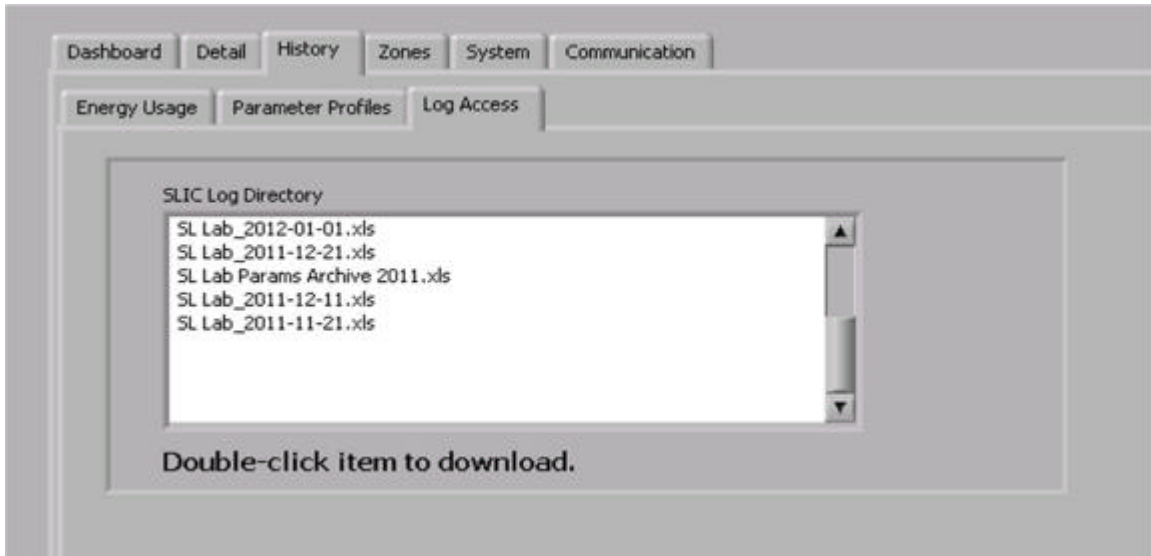


PARAMETER PROFILES



Tab: History	Sub-tab: Parameter Profiles	Used to Load, Save and Delete Parameter Profiles	
Group Label	Button / Selector	Function	Access level required to adjust
	List of Parameter Profiles (no label)		info only
none	Save Profile	Button to bring up a dialog to save the current parameters as a profile for future use. You will get a chance to create a name for the profile in the dialog.	homeowner
	Delete Profile	Button to bring up a dialog to delete the currently selected profile.	homeowner
	Selected Profile (highlighted) in list	Double click on any profile to load it automatically.	homeowner

LOG ACCESS



Tab: History	Sub-tab: Parameter Profiles	Used to Load, Save and Delete Parameter Profiles	
Group Label	Button / Selector	Function	Access level required to adjust
	List of Parameter Profiles (no label)		info only
none	Save Profile	Button to bring up a dialog to save the current parameters as a profile for future use. You will get a chance to create a name for the profile in the dialog.	homeowner
	Delete Profile	Button to bring up a dialog to delete the currently selected profile.	homeowner
	Selected Profile (highlighted) in list	Double click on any profile to load it automatically.	homeowner

INDOOR ZONES



Tab: Zones	Sub-tab: Indoor Zones	Used to view and/or adjust: Thermostat Settings for each zone	
Group Label	Parameter	Function	Access level required to adjust
none	n/a	Zone name	info only
	Room Temperature		info only
	Comfort Target	The physical thermostat setting, as modified by any setback offset (see below)	info only
	Setback Assignment	Which Setback Group, A, B, or No Setback, that this zone belongs to	homeowner
	User Setting	The physical thermostat setting. This parameter will not be present if the zone is not in a setback group.	info only
	Offset	The current offset (-5 to +5) from the physical thermostat setting (User Setting) which this zone is using. This parameter will not be present if the zone is not in a setback group. If the zone is in a setback group, the Comfort Target = User Setting + Offset.	info only
	Local Mode	The three position switch setting on the physical thermostat	info only
	Whole House Mode	Current setting for the Whole House Mode	info only
	Whole House Override	Lit up if the Whole House Mode is overriding the Local Mode	info only
	Solar On Setpoint	The zone will take solar heat if the room temperature is below the Solar On Setpoint. Solar ON = Comfort Target + 1/2 Comfort Band	Calculated
	Solar Off Setpoint	The zone will stop taking solar heat if the room temperature is above the Solar Off Setpoint. Solar OFF = Solar ON + Solar Hysteresis	Calculated
	Aux On Setpoint	The zone will call for backup heat (Stage 2) if the room temperature is below the Aux On Setpoint. Aux ON = Comfort Target - 1/2 Comfort Band	Calculated
	Aux Off Setpoint	The zone will stop taking backup heat if the room temperature is above the Aux Off Setpoint. Aux OFF = Aux ON + Solar Hysteresis	Calculated
	Comfort Band	The spread between the Solar On Setpoint and the Auxilliary On Setpoint.	homeowner
	Solar Hysteresis		homeowner
	Auxilliary Hysteresis		homeowner

POOL/SPA



Tab: Zones	Sub-tab: Pool/Spa	Used to view and/or adjust: Thermostat Settings for the pool and spa	
Group Label	Parameter	Function	Access level required to adjust
none	n/a	Zone name: Pool or Spa	info only
	Water Temperature		info only
	Comfort Target	The physical thermostat setting	info only
	Local Mode	The three position switch setting on the physical thermostat	info only
	Whole House Mode	Current setting for the Whole House Mode	info only
	Whole House Override	Lit up if the Whole House Mode is overriding the Local Mode	info only
	Solar On Setpoint	The zone will take solar heat if the pool/spa temperature is below the Solar On Setpoint. Solar ON = Comfort Target. Note the difference in the way the Solar ON is calculated for the Pool and Spa compared to the room zone thermostats.	Calculated
	Solar Off Setpoint	The zone will stop taking solar heat if the pool/spa temperature is above the Solar Off Setpoint. Solar OFF = Solar ON + Solar Hysteresis	Calculated
	Aux On Setpoint	The zone will call for backup heat (Stage 2) if the pool/spa temperature is below the Aux On Setpoint. Aux ON = Comfort Target – Comfort Band	Calculated
	Aux Off Setpoint	The zone will stop taking backup heat if the pool/spa temperature is above the Aux Off Setpoint. Aux OFF = Aux ON + Solar Hysteresis	Calculated
	Comfort Band	The spread between the Solar On Setpoint and the Auxilliary On Setpoint.	homeowner
	Solar Hysteresis		homeowner
	Auxilliary Hysteresis		homeowner



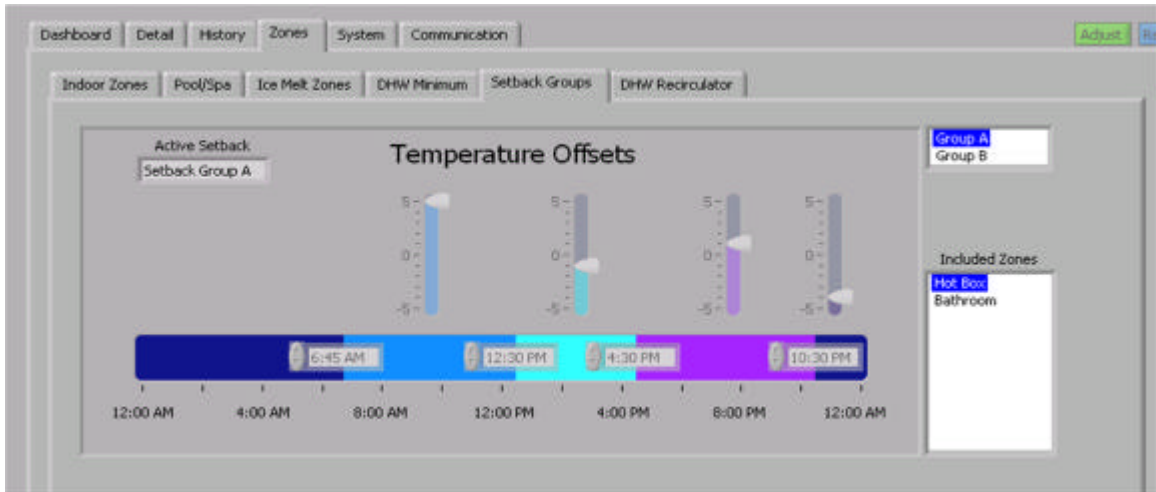
ICE MELT ZONES

Tab:	Sub-tab:	Used to view and/or adjust:	
Zones	Ice Melt Zones	Settings for Ice Melt Zones	
Group Label	Parameter	Function	Access level required to adjust
none	n/a	Ice Melt zone name	Info
	Water Temperature		Info
	External Timer	Lit up if the external time is activating the selected ice melt zone	Info
	Ice Melt	Software button to turn on or off the ice melt zone without the external timer. Turning the ice melt off here WILL NOT override the external timer if it is on.	homeowner
	Ice Melt Set Time	When the ice melt is turned on via the software button, it will run for this many hours.	homeowner
	Remiaining Time	If the ice melt is on via the software button, this is the time until it will tun off automatically.	Info

DHW MINIMUM

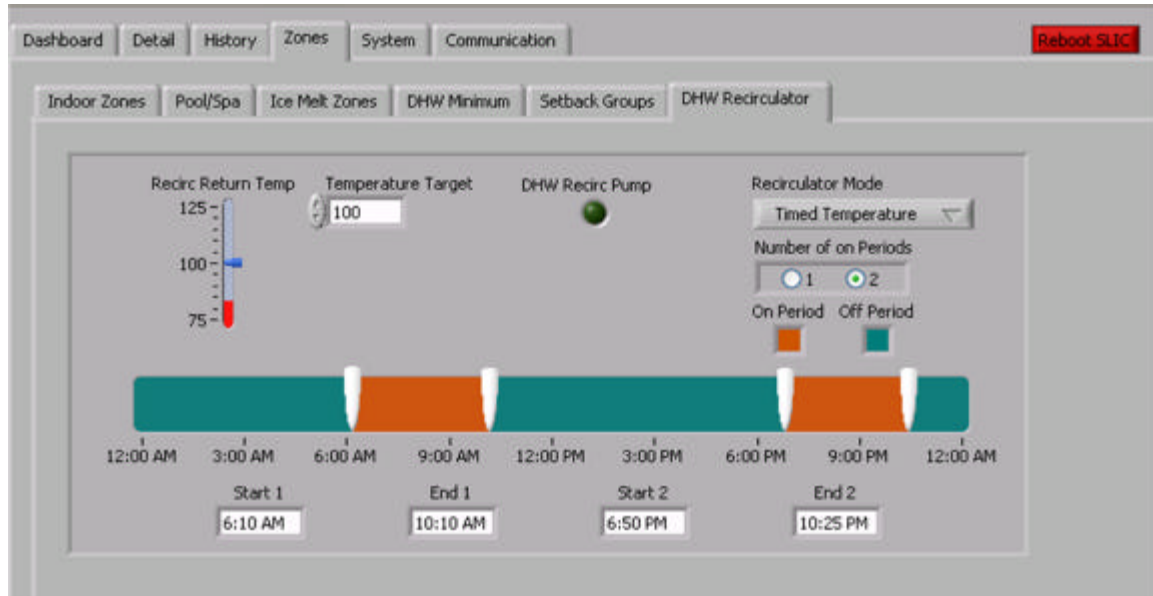
Tab:	Sub-tab:	Used to view and/or adjust:	
Zones	DHW Minimum	Call for backup heating for DHW recovery	
Group Label	Parameter	Function	Access level required to adjust
none	DHW Top	Temperature at the top of the DHW tank	Info
	On Setpoint	The DHW will call for backup heating to recover DHW minimum temperature if the top temperature is below the On Setpoint.	Calculated
	Off Setpoint	OFF = ON + Hysteresis	Calculated
	On Setpoint		homeowner
	Hysteresis		installer

SETBACK GROUPS



Tab: Zones	Sub-tab: Setback Groups	Used to view and/or adjust: Thermostats using setbacks (programable)	
Group Label	Parameter	Function	Access level required to adjust
none	Active Setback	Which group settings are currently being displayed. When you select a group in the top righthand box, the zones belonging to that group are highlighted in the box below. To assign a zone to a group, use the Indoor Zones tab.	info only
	Temperature Offsets	The slide indicators and adjusters show the offset (from -5 to +5) for each of the four time periods below the respective adjuster for the current group.	homeowner
	Time Periods (no label)	Each of the four time periods for the group is displayed in a different color. The late night wraps around to the early morning (i.e., they are the same period). A time period must be at least 1 hour long.	homeowner

DHW RECIRCULATOR



Tab: Zones	Sub-tab: DHW Recirculator	Used to view and/or adjust: Settings for DHW recirculator pump	
Group Label	Parameter	Function	Access level required to adjust
none	Reirculator Mode	<p>There are 5 different Recirculator Modes that can be selected via this pulldown menu:</p> <p>1) Demand Temperature – The DHW recirculator starts on a demand switch and runs until the returning temperature is above the Temperature Target.</p> <p>2) Demand Timed – The DHW recirculator starts on a demand switch and runs for a set amout of seconds (not shown in figure).</p> <p>3) Timed Temperature – During the green time periods (one or two per day), the DHW return temperature is maintained within 10 degrees of the Temperature Target (mode shown below).</p> <p>4) Timer Only – The recirculator runs continuously during the one or two green time periods.</p> <p>5) Temperature Only – The DHW return temperature is maintained within 10 degrees of the Temperature Target at all times.</p>	homeowner
	Temperature Target	This parameter adjustment will only be displayed for modes 1, 3 and 5.	homeowner
	Recirc Run Time	The number of seconds the recirculator runs in the Demand Timed mode. Only displayed for mode 2. (not shown below)	homeowner
	Time Periods (no label)	Each of the two "on" time periods is displayed in orange. This timer display will only be shown for modes 3 and 4.	homeowner

SOLAR AVAILABLE

Dashboard
Detail
History
Zones
System
Communication

AdjustRevert

Solar Available
Domestic Hot Water
Storage Out
Panels

Solar Hot Pipe

135

Aux Call Blocks Solar Call

True

DHW Priority

True

Solar Available Blocks Solar

True

Storage For DHW Transfer (Heating Modes Only)

True

Heating Controls

Zone Solar On SP

130

Zone On Setpoint

130

Indoor Zones Solar Available

True

Zone Solar Hyst

5

Zone Off Setpoint

125

DHW Solar On SP

125

DHW On SP

125

DHW Solar Available

True

DHW Solar On

5

DHW Off SP

120

Pool Solar On SP

100

Pool Solar On SP

100

Pool Solar Available

True

Pool Solar Hyst

5

Pool Solar Off SP

95

Pool Diff Hyst

6

Pool Diff On SP

11

Pool Solar Diff OK

True

Pool Diff Off SP

5

Pool Diff Off SP

5

Pool Solar Diff (Hot Pipe - Pool Temp)

141

Spa Solar On SP

110

Spa Solar On SP

110

Spa Solar Available

True

Spa Hysteresis

5

Spa Solar Off SP

105

Storage Solar On SP

140

Storage Solar On SP

140

Storage Solar Available

True

Storage Hyst

2

Storage Solar Off SP

138

White Plate Temp

72

Cooling Controls

Zone Cooling Hyst

20

Zone Cooling Off SP

105

Indoor Zones Cooling Available

True

Zone Cooling On SP

85

Zone Cooling On SP

85

Zone Cool Diff Hyst

20

Zone Cooling Diff On

22

Zone Cool Diff Off SP

2

Zone Cooling Diff Off

2

DHW and Storage Tanks

Tank Cooling Hyst

10

Tank Cooling Off SP

110

Tank Cooling Available

True

Tank Cooling On

100

Tank Cooling On SP

100

Tab: System	Sub-tab: Solar Available	Used to view and/or adjust: Priorities of Use of Solar Heat	
Group Label	Parameter	Function	Access level required to adjust
Heating Controls	Solar Hot Pipe (Solar Input)		info only
	Aux Call Blocks Solar Call	True/False. When TRUE, any Stage 2 call will prevent solar heat going to any load that only has a Stage 1 call.	installer
	DHW Priority	True/False. When TRUE, a DHW call for boiler heating (DHW < DHW minimum) will prevent boiler and/or solar heat from going to any other load besides DHW.	installer
	Solar Available Blocks Boiler	True/False. When TRUE, Solar Available for a heating load will prevent the boiler from coming on for that load, even if there is a Stage 2 call for heat.	installer
	Storage for DHW Transfer (Heating Modes Only)	True/False. When TRUE, Storage heat is allowed to be used for DHW Transfer in any of the Whole House heating modes. (Transfer is always allowed in the OFF or COOLING modes.)	installer
Heating Controls: Indoor Zones Solar Available	Zone On Setpoint	Solar is hot enough for use in indoor zone heating if Hot Pipe is above ON SP.	Calculated
	Zone Off Setpoint	OFF SP = ON – Hyst	Calculated
	Zone Solar On SP		installer
	Zone Solar Hyst		installer
Heating Controls: DHW Solar Available	DHW On SP	Solar is hot enough for use in making DHW if Hot Pipe is above ON SP.	Calculated
	DHW Off SP	OFF SP = ON – Hyst	Calculated
	DHW Solar On SP		installer
	DHW Solar Hyst		installer
Heating Controls: Spa Solar Available	Spa Solar On SP	Solar is hot enough for use in Spa heating if Hot Pipe is above ON SP.	Calculated
	Spa Solar Off SP	OFF SP = ON – Hyst	Calculated
	Spa Solar On SP		installer
	Spa Hysteresis		installer
Heating Controls: Pool Solar Available	Pool Solar On SP	Solar is hot enough for use in Pool heating if Hot Pipe is above ON SP.	Calculated
	Pool Solar Off SP	OFF SP = ON – Hyst	Calculated
	Pool Solar On SP		installer
	Pool Hysteresis		installer
	Pool Solar Diff	Hot Pipe – Pool Temp	info only
	Pool Diff On SP	Solar is hot enough for use in Pool heating if the difference between the Hot Pipe and the Pool is above ON SP; ON SP = OFF SP + Hyst	Calculated
	Pool Diff Off SP		Calculated
	Pool Diff Off SP		installer
	Pool Diff Hyst		installer
Heating Controls: Storage Solar Available	Storage Solar On SP	Solar is hot enough for use in Storage heating if Hot Pipe is above ON SP.	Calculated
	Storage Solar Off SP	OFF SP = ON – Hyst	Calculated
	Storage Solar On SP		installer
	Storage Hysteresis		installer
Cooling Controls: Zone Cooling	White Plate Temp		info only
	Zone Cooling On SP	Night Sky Radiant Cooling (NSRC) is available for indoor zone cooling if White Plate is below ON SP.	Calculated
	Zone Cooling Off SP	OFF = ON + Hyst	Calculated
	Zone Cooling On SP		installer
	Zone Cooling Hyst		installer
	Zone Cooling Diff On	NSRC is available for indoor zone cooling if the difference between an individual zone and the White Plate is above the diff ON SP; (Zone > White Plate) ON SP = Off SP + Hyst	Calculated
	Zone Cooling Diff Off		Calculated
	Zone Cooling Diff Off SP		installer
	Zone Cooling Diff Hyst		installer
Cooling Controls: DHW and Storage Tank	Tank Cooling On SP	NSRC is available for Tank cooling if White Plate is below ON SP.	Calculated
	Tank Cooling Off SP	OFF = ON + Hyst	Calculated
	Tank Cooling On		installer
	Tank Cooling Hyst		installer



DOMESTIC HOT WATER

Dashboard
Detail
History
Zones
System
Communication
Reboot SLC

Solar Available
Domestic Hot Water
Storage Out
Panels

Solar Hot Pipe
Solar/DHW Differential
139
21
DHW Solar Heating

DHW Tank Top
127
DHW Tank Bottom
118
DHW Call for Solar or Recapture

Diff Hyst
2
Diff On Setpoint
14
Differential OK

Diff Off Setpoint
12
Diff Off Setpoint
12

Hot Pipe Min On SP*
125
Hot Pipe OK

Hot Pipe Min Off SP*
121

Tank High Limit SP
165
Tank High Limit
165
Tank OK

Tank High Limit Hyst
5
Tank Heating Allowed
160

Stranded Heat Recapture
Recapture On
20
Recapture Off
15

White Plate Temp
91
DHW Night Sky Cooling

Tank High Limit
165
DHW Call for Radiant Cooling

Heating Mode OK

DHW Cooling Gap
5
Cooling On Setpoint
160
Tank Needs Cooling

Cooling Gap Hyst
5
Cooling Off Setpoint
155

White Plate Min Off SP*
110
White Plate Temp OK

White Plate Min On SP*
100

Tab: System	Sub-tab: Domestic Hot Water	Used to view and/or adjust: Solar operation of Domestic Hot Water	
Group Label	Parameter	Function	Access level required to adjust
DHW Solar Heating	Solar Hot Pipe (Solar Input)	Hot Pipe Temperature	info only
	Solar/DHW Differential	Hot Pipe – DHW Bottom	info only
	DHW Tank Top		info only
	DHW Tank Bottom		info only
	Differential On Setpoint	DHW tank can take solar heat if Differential is above SP; Differential = Hot Pipe – DHW Bottom; ON = OFF + Hyst	Calculated
	Differential Off Setpoint		Calculated
	Diff Off Setpoint		installer
	Diff Hyst		installer
	Hot Pipe Min On SP	DHW tank can take solar heat if Hot Pipe is above Min SP; set on Solar Available tab	info only
	Hot Pipe Min Off SP		info only
	Tank High Limit	DHW tank can take solar heat if Tank Top is below High Limit	Calculated
	Tank Heating Allowed	Allowed = High Limit – Hyst	Calculated
	Tank High Limit SP		installer
	Tank High Limit Hyst		installer
	DHW Call for Solar Heat	Stoarge takes solar heat. Requires all three previous tests (differential, hot pipe, tank) to be true.	info only
Stranded Heat Recapture	Recapture On	DHW tank will take stranded heat out of the primary loop if the Flow Center Hot temperature (immediately post-boiler) is greater	installer
	Recapture Off	than the DHW bottom temperature by the specified amount.	installer
DHW Night Sky Cooling	White Plate Temp		info only
	Tank High Limit		info only
	Cooling On Setpoint	DHW tank will call for cooling if DHW top is above this temperature. ON SP = Tank High Limit – Cooling Gap.	Calculated
	Cooling Off Setpoint	OFF SP = ON – Hyst	Calculated
	DHW Cooling Gap		installer
	Cooling Gap Hyst		installer
	White Plate Min Off SP	set on Solar Available tab	info only
	White Plate Min On SP	set on Solar Available tab	info only
	Heating Mode OK	requires Whole House Mode to be OFF or COOLING	info only
	DHW Call for Radiant Cooling	DHW requests radiant cooling if above three conditionss are true (heating mode, tank, white plate temp)	info only



STORAGE OUT (1)

Tab: System	Sub-tab: Storage Out	Used to view and/or adjust: operation and use of stored heat	
Group Label	Parameter	Function	Access level required to adjust
Storage Solar Heating	Solar Input	Hot Pipe Temperature	Info
	Solar/Storage Differential	Hot Pipe - Storage Bottom	Info
	Storage Tank Top		Info
	Storage Tank Bottom		Info
	Differential On Setpoint	Storage tank can take solar heat if Differential is above SP; Differential = Hot Pipe – Storage Bottom; set on DHW tab	Info
	Differential Off Setpoint		Info
	Hot Pipe Min On SP	Storage tank can take solar heat if Hot Pipe is above Min SP; set on Solar Available tab	Info
	Hot Pipe Min Off SP		Info
	Tank High Limit	Storage tank can take solar heat if Tank Top is below High Limit; set on DHW tab	Info
	Tank Heating Allowed		Info
	DHW Priority On SP	Storage tank will not take solar heat unless DHW is above this SP	Calculated
	DHW Priority Off SP	DHW Priority OFF = ON SP - Hyst	Calculated
	DHW Solar Priority SP		installer
	DHW Priority Hyst		installer
Boiler Preheat	Storage Call for Solar Heat	Storage takes solar heat. Requires all four previous tests (differential, hot pipe, tank, DHW Solar Priority) to be true.	Info
	Diff On SP	Storage will be used for boiler preheat if difference is above this setpoint; diff = storage top - FC cool (post HX); Difference ON = OFF SP + Hyst	Calculated
	Diff Off SP		Calculated
	Diff Off Setpoint		installer
	Diff Hyst		installer
	Storage – FC Cool		Info



STORAGE OUT (2)

The screenshot shows a control panel with two main sections: 'Storage to DHW Transfer' and 'Storage Night Sky Cooling'.

Storage to DHW Transfer:

- Hot Pipe Min On SP*: 140
- Hot Pipe Min Off SP*: 138
- Tank High Limit+: 190
- Tank Heating Allowed+: 185
- Transfer Diff Hyst: 5
- Transfer Diff On SP: 15
- Transfer Diff Min: 10
- Transfer Diff Off SP: 10
- Storage Top > DHW Bot: -19

Storage Night Sky Cooling:

- White Plate Temp: 75
- Tank High Limit: 190
- Storage Cooling Gap: 30
- Cooling On Setpoint: 160
- Cooling Gap Hyst: 5
- Cooling Off Setpoint: 155
- Tank Needs Cooling: [button]
- White Plate Min Off SP*: 110
- White Plate Min On SP*: 100
- White Plate Temp OK: [button]
- Heating Mode OK: [button]
- Storage Call for Radiant Cooling: [button]

Footnotes: *For adjustment of these parameters, reference DHW tab *For adjustment of these parameters, reference Solar Available tab

Tab: System	Sub-tab: Storage Out	Used to view and/or adjust: operation and use of stored heat	
Group Label	Parameter	Function	Access level required to adjust
Storage to DHW Transfer	Transfer Diff On SP	Storage tank will transfer heat to DHW tank if storage top > DHW bottom; ON SP = Diff Min + Diff Hyst	Calculated
	Transfer Diff Off SP	(Diff Min)	Calculated
	Transfer Diff Min		installer
	Transfer Diff Hyst		installer
	Transfer Diff	Storage Top – DHW bottom	Info
Storage Night Sky Cooling	White Plate Temp		Info
	Tank High Limit		Info
	Cooling On Setpoint	Storage tank will call for cooling if Storage top is above this temperature. ON SP = Tank High Limit – Cooling Gap.	Calculated
	Cooling Off Setpoint	OFF SP = ON – Hyst	Calculated
	Storage Cooling Gap		installer
	Cooling Gap Hyst		installer
	White Plate Min Off SP	set on Solar Available tab	Info
	White Plate Min On SP	set on Solar Available tab	Info
	Heating Mode OK	requires Whole House Mode to be OFF or COOLING	Info
	Storage Call for Radiant Cooling	Storage requests radiant cooling if above three conditions are true (heating mode, tank, white plate temp)	Info

PANELS

Dashboard | Detail | History | Zones | System | Communication | **Reboot SLC**

Solar Available | Domestic Hot Water | Storage Out | **Panels**

Controller Type: Differential | Diff = Bank Temp – Cold Sensor (Cold Sensor = Pre HX or Flow Temp) | Cold Sensor: 135

Bank 1 Pump

Solar Bank 1 Pump On: 5 | Bank 1 Pump On: 5 | Bank 1 Temp: 145 | Bank 1 Pump: ■

Solar Bank 1 Hyst: 2 | Bank 1 Pump Off: 3

Bank 2 Pump

Solar Bank 2 Pump On: 5 | Bank 2 Pump On: 5 | Bank 2 Temp: 145 | Bank 2 Pump: ■

Solar Bank 2 Hyst: 2 | Bank 2 Pump Off: 3

Bank 3 Pump

Solar Bank 3 Pump On: 5 | Bank 3 Pump On: 5 | Bank 3 Temp: 142 | Bank 3 Pump: ■

Solar Bank 3 Hyst: 2 | Bank 3 Pump Off: 3

Solar Overtemp

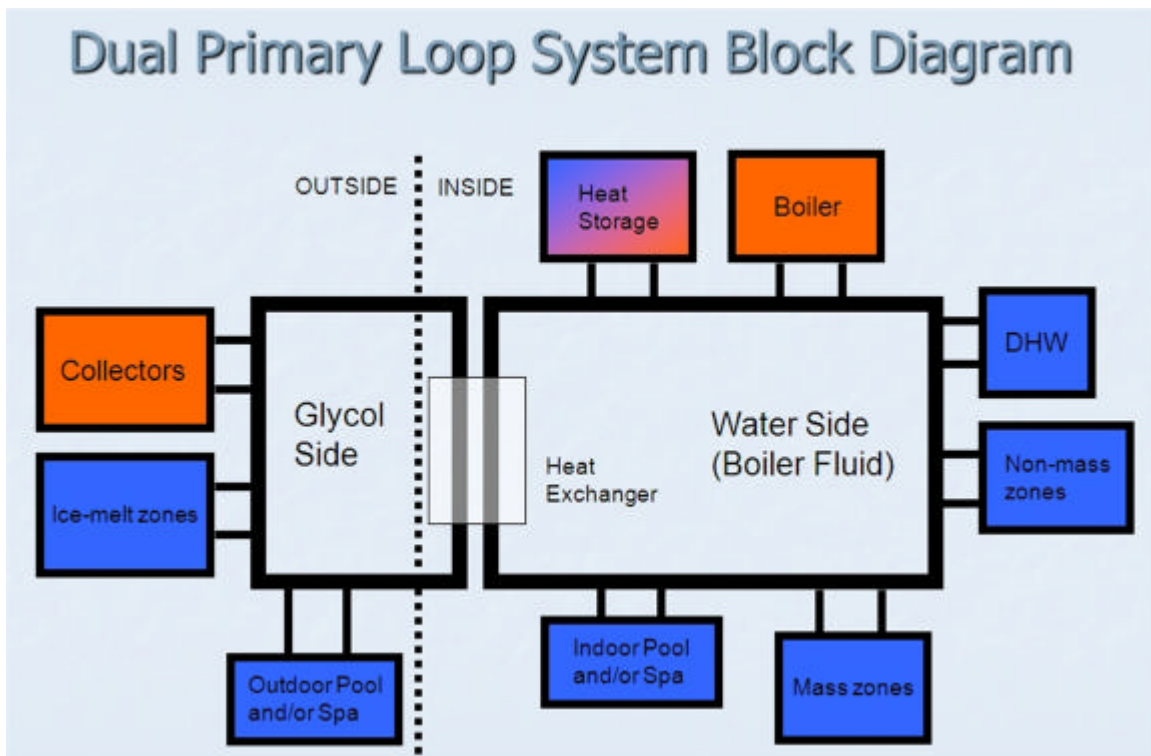
Min Temp (Bank & HP): 142 | SOT Setpoint: 175 | On Setpoint: 175 | SOT Hyst: 5 | Off Setpoint: 170

Tab:	Sub-tab:	Used to view and/or adjust:	
System	Panels	collector bank AC pumps and overheat control	
Group Label	Parameter	Function	Access level required
none	Controller Type	Solar AC pumps: setpoint or differential controller	info only
	Cold Sensor	Depending on if the system has energy monitoring or not, the cold sensor is the Flow Temp (Grundfos) sensor or the PreHX sensor respectively.	info only
Bank 1 Pump	Bank 1 Pump On	Pump turns on at temperature setpoint or differential (differential = bank temp – cold sensor)	Calculated
	Bank 1 Pump Off	pump turns off at Bank 1 Pump On – Hyst	Calculated
	Solar Bank 1 Pump On		installer
	Solar Bank 1 Hyst		installer
similar functions for banks 2 and 3			
Solar Overtemp	Min Temp (Bank & HP)		info only
	Off Setpoint	heat dissipation function turns off at SOT Setpoint – SOT Hyst	Calculated
	SOT Setpoint		installer
	SOT Hyst		installer

COMMUNICATION

Tab: Communication	Sub-tab: none	Used to view and/or adjust: Logon and select SLIC	
Group Label	Parameter	Function	Access level required to adjust
none	Username	to log in; case sensitive	observer
	Password	to log in; case sensitive	observer
	Log	current activity of communications with SLIC and Central Server	Info
none	ID Nums	SLICs which your ID is allowed to access	Info
	ID	currently selected SLIC	Info
	Address	URL of currently selected SLIC	Info
	Mode	communicate with the selected SLIC locally (on your LAN) or remotely (via CS)	observer
	Access Level	current access level (governs which parameters you can adjust)	Info

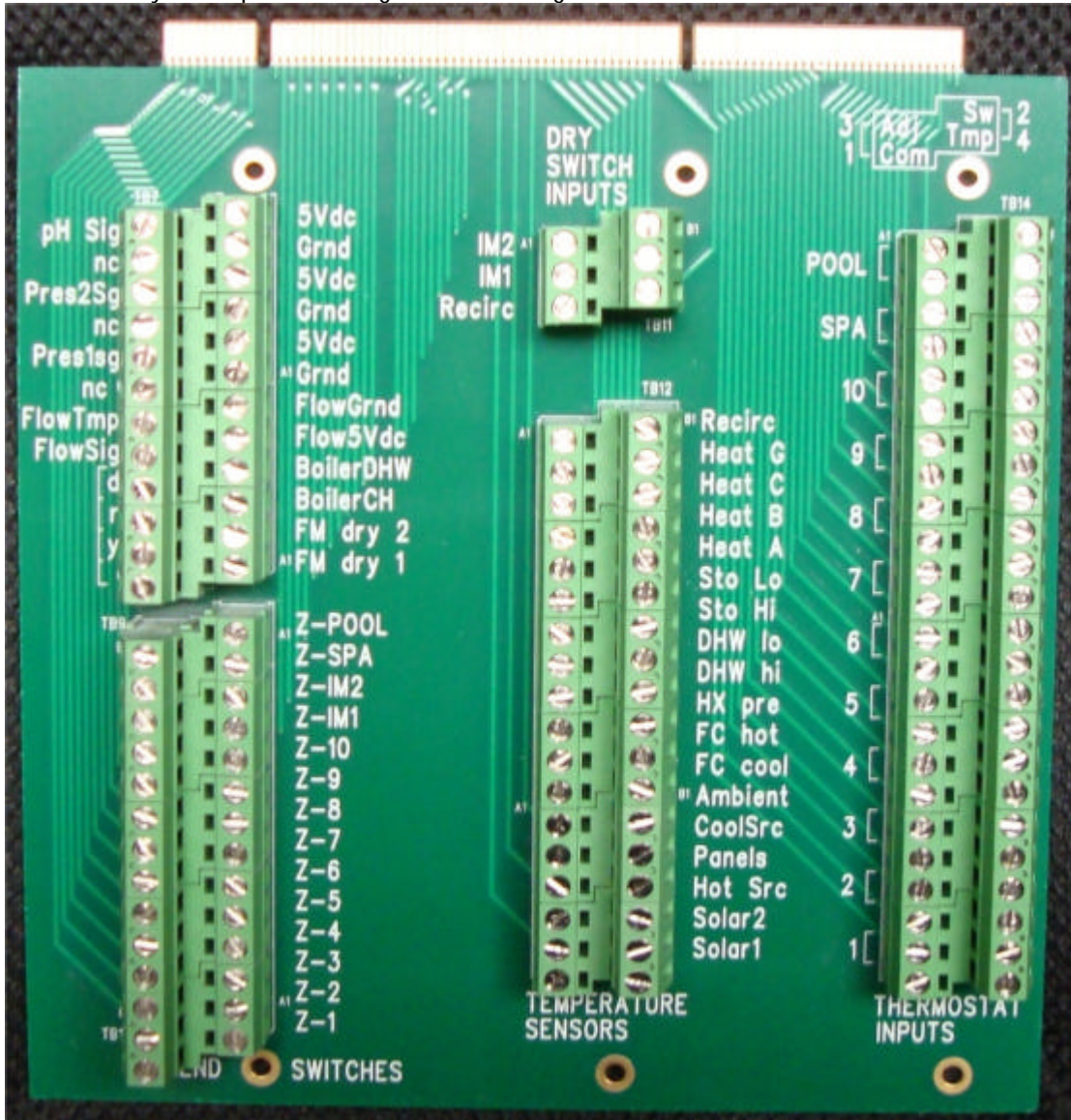
PIPING DIAGRAM – TYPICAL PIPING CONFIGURATION BLOCK DIAGRAM



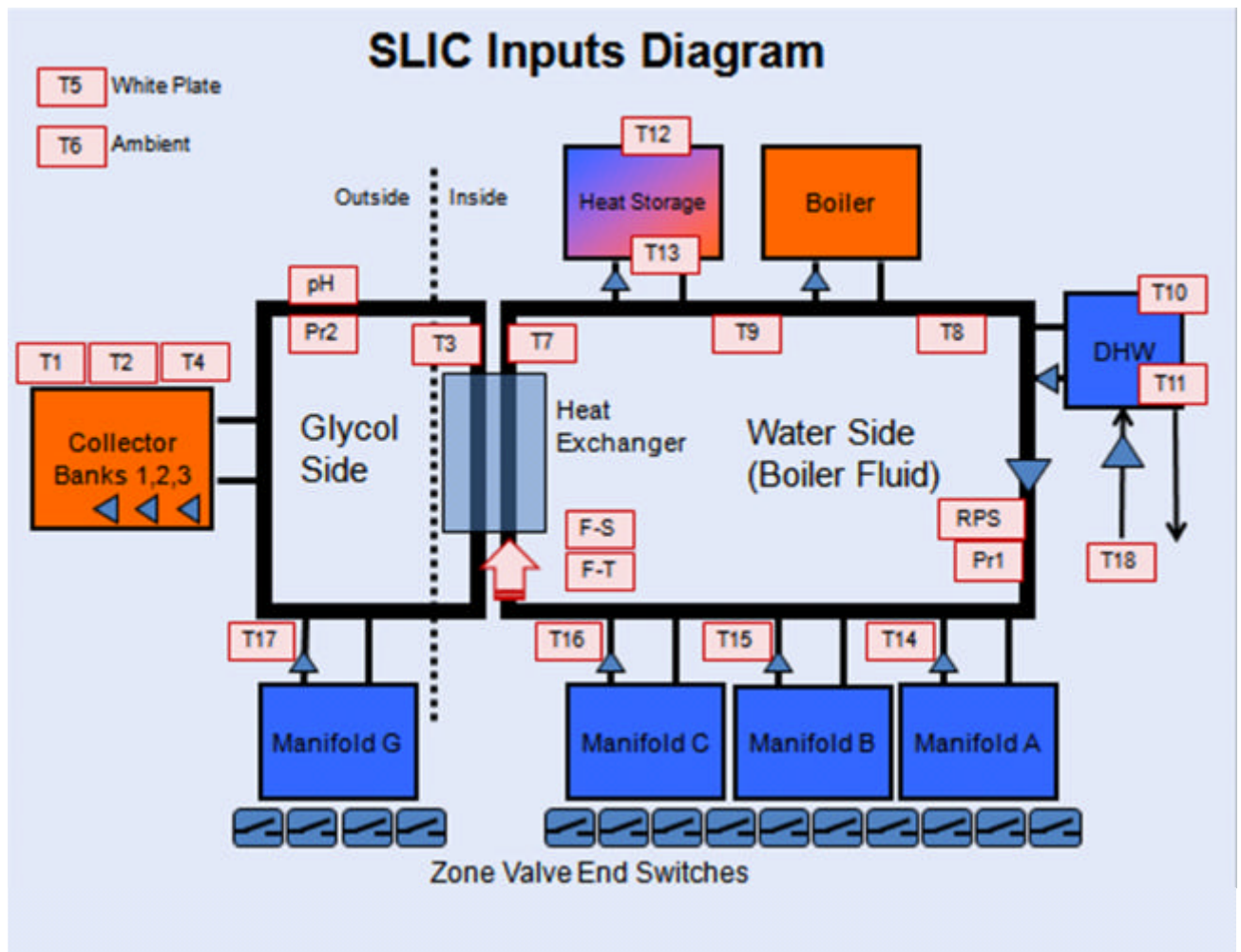
CONNECTOR BOARDS WIRING – SUMMARY TABLES

INPUT BOARD

Refer to Full System Inputs Plumbing and Sensor Diagram below.



INPUT DIAGRAM



INPUT LIST

System Thermistors, Thermostats, other Sensors, and a few Outputs				
Type	Terminal Strip Label	Plumbing Diagram	Location	Connector Board Label
10K Thermistor	Temperature Sensors	T1	Collector Bank 1	Solar 1
		T2	Collector Bank 2	Solar 2
		T3	Hot Pipe (Solar Input)	Hot Src
		T4	Collector Bank 3	Panels
		T5	White Plate (NSRC)	CoolSrc
		T6	Ambient	Ambient
		T7	post HX	FC cool
		T8	post Boiler	FC hot
		T9	pre HX or pre Boiler**	HX pre
		T10	DHW top	DHW hi
		T11	DHW bottom	DHW lo
		T12	Storage top (hot end)	Sto Hi
		T13	Storage bottom (cool end)	Sto Lo
		T14	Manifold A return	Heat A
		T15	Manifold B return	Heat B
		T16	Manifold C return	Heat C
		T17	Manifold G return	Heat G
		T18	DHW recirculator return	Recirc
		RPS	post DHW	++

** T9 can appear in two locations depending on the system plumbing:

- a) no Grundfos meter - T9 is placed pre HX;
- b) Grundfos and storage tank - T9 is placed between the storage tank and the boiler;
- c) Grundfos but no storage tank - T9 is not used.

++ The RPS sensor is a 'repurposed' sensor. It is connected to an otherwise unused thermistor input which will be

pressure sensor	No Label	Pr1	Water loop	Pres1sg
5VDC pressure sensor supply				5Vdc
pressure sensor ground				Grnd
no connection				nc
pressure sensor		Pr2	Glycol loop	Pres2sg
5VDC pressure sensor supply				5Vdc
pressure sensor ground				Grnd
no connection				nc
pH sensor		pH	Glycol loop	pH Sig
pH sensor ground				Grnd
no connection				5Vdc
no connection				nc
Grundfos meter flow		F-S	pre HX	FlowSig
Grundfos meter temp		F-T		FlowTmp
Grundfos meter supply		n/a		Flow5Vdc
Grundfos meter ground		n/a		FlowGrnd
TT contact closure (output)		Boiler	Boiler CH signal	BoilerCH
			Boiler DHW signal	BoilerDHW
dry switch (output)		n/a	TBD	FM dry 1
dry switch (output)		n/a	TBD	FM dry 2

Continued next page.



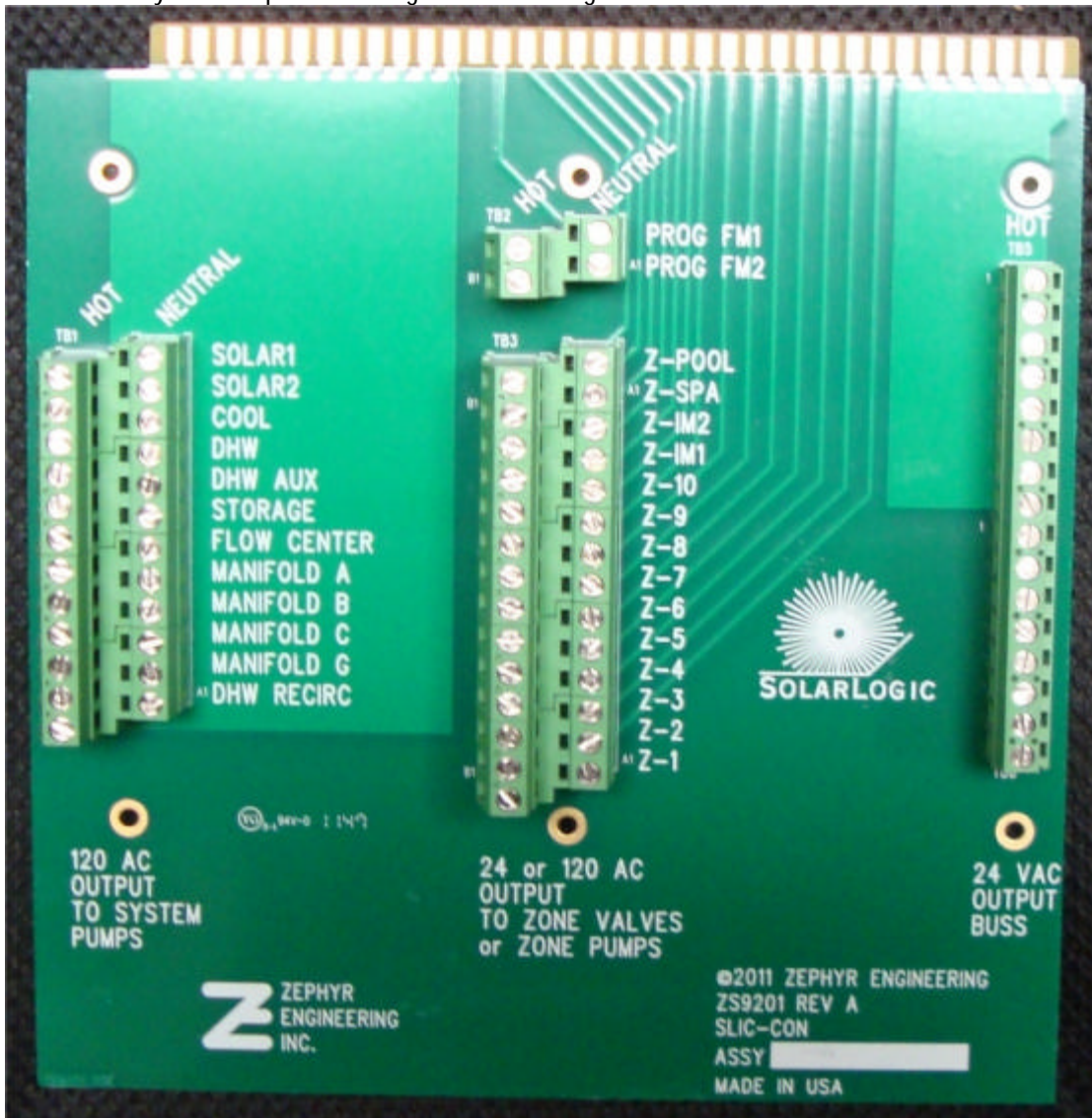
end switch		End Switches	switches	Zone Valves	self-explanatory
contact closure switch (input)		Dry Switch Inputs	n/a	Ice Melt 1 timer	IM1
contact closure switch (input)			n/a	Ice Melt 2 timer	IM2
contact closure switch (input)			n/a	Recirculator call buttons	Recirc
combination	Sw 2 3 Adj Tmp 4 1 Com	Thermostat Inputs	n/a	Room Thermostats	self-explanatory

also reference thermostats

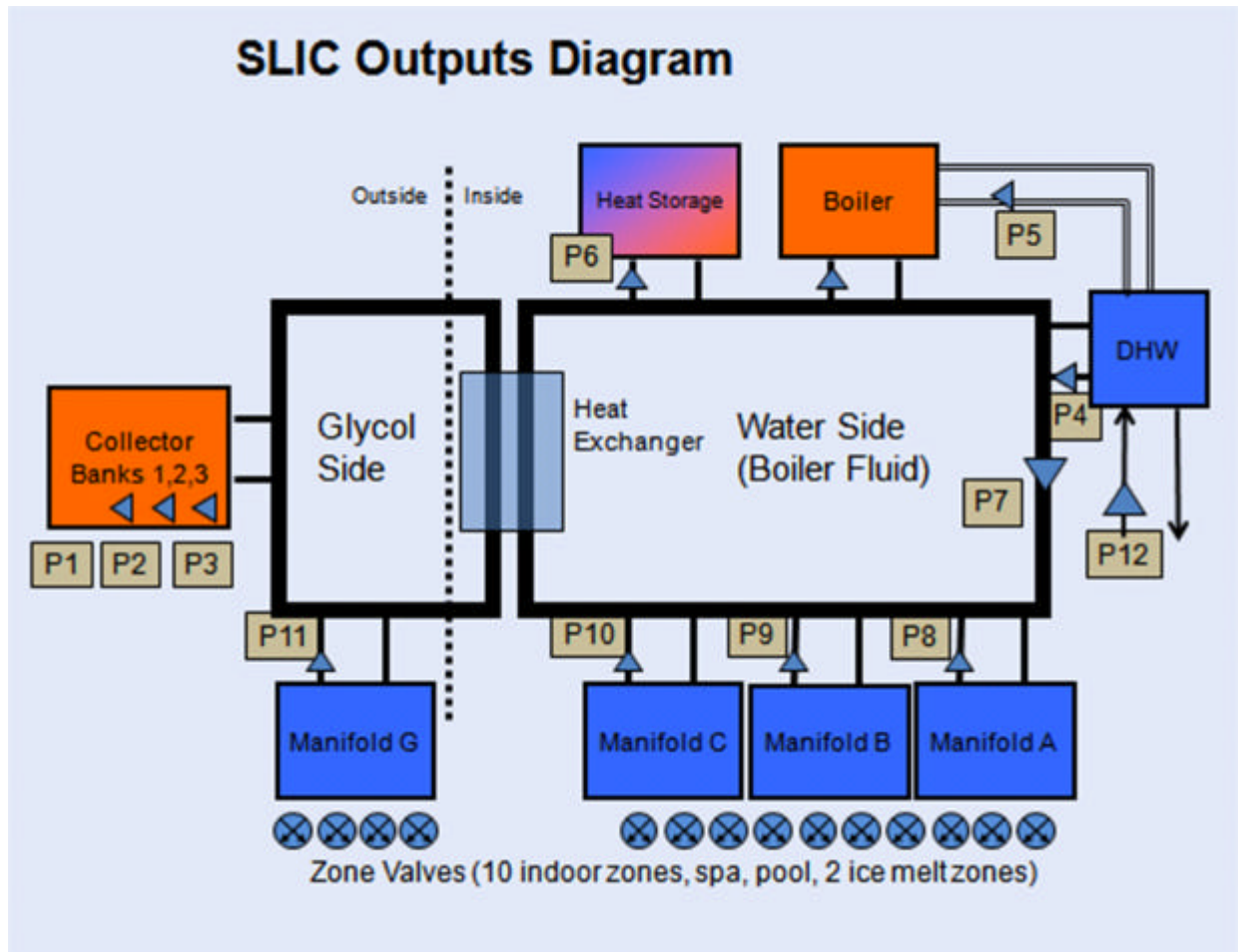


OUTPUT BOARD

Refer to Full System Outputs Plumbing and Sensor Diagram below.



OUTPUT DIAGRAM



OUTPUT LIST

System Pumps and Valves				
Type	Input Connector Board Terminal Strip	Plumbing Diagram	Pump Location	Connector Board Label
120 VAC	120 AC Output to System Pumps	P1	Collector Bank 1	Solar1
		P2	Collector Bank 2	Solar2
		P3	Collector Bank 3	Cool
		P4	DHW Tank	DHW
		P5	DHW Tank Auxilliary Loop	DHW Aux
		P6	Storage Tank	Storage
		P7	Primary Loop (FC)	Flow Center
		P8	Manifold A	Manifold A
		P9	Manifold B	Manifold B
		P10	Manifold C	Manifold C
		P11	Manifold G	Manifold G
		P12	DHW recirculator	DHW Recirc
120VAC or 24VAC (select with switches)	24 or 120 AC Output to Zone Valves or Zone Pumps	Zone Valves or circulators	Zone Valves or circulators	self-explanatory
120VAC or 24VAC (select with switches)	no label	n/a	TBD - instructions will come with plumbing diagram	Prog FM1
		n/a	TBD - instructions will come with plumbing diagram	Prog FM2
24 VAC	24 VAC Output Buss	Zone Valves	"Smart" Zone Valves	HOT



GLOSSARY OF TERMS

General note: Unless otherwise indicated on displays or in this glossary, all measurement numbers presented in this document and on the VSLIC interface are degrees Fahrenheit.

AC Current – The detail tab displays the total current (amps) being drawn by all the sensors, pumps and valves controlled by the SLIC. (Note: this display does not include current being drawn by the boiler.)

Access Level – Different VSLIC users have different access privileges for changing system parameters. The access levels are Observer (no privileges), Homeowner (comfort-related privileges), Installer (comfort and system privileges), and SolarLogic (all privileges). If the 'Adjust' is active, settings which are available at the current access level are generally presented with a white background.

Address – When logging onto a SLIC via the VSLIC program, the VSLIC uses the local LAN address (e.g., 192.168.1.100) or the SolarLogic central server URL (e.g., secure.solarlogicllc.com) for communicating.

Bank 1, 2, 3 (temperature) – collector panels grouped together and pumped by one pump are referred to as a bank. The SLIC can handle up to three banks and the temperatures are indicated on the detail tab.

DHW – domestic hot water (all hot water used for washing, etc.)

DHW Minimum – the temperature at the top of the DHW tank below which the SLIC system will focus all available heat sources domestic hot water (all hot water used for washing, etc.)

DHW Recirculator – Also known as an Instant Hot Water system, a DHW Recirculator is a plumbing configuration in conjunction with a recirculator pump that provides hot water at plumbing fixtures without having to wait and/or without having to send cool water down the drain. In some buildings, the 'instant' aspect is the most important; in other environments, the water savings is the most important. The SLIC controls the DHW Recirculator pump through a combination of time and temperature controls. See DHW Recirculator in the manual for further explanation.

DHWP – domestic hot water priority – the DHW system has a minimum set temperature, below which any available heat source will be used to make hot water with priority over other heating tasks. The heat source could be the boiler or solar.

Diagnostic – A mode of operation of the SLIC where the VSLIC controls every component in the heating system individually. This mode is used by a trained installer or SolarLogic only.

FC – flow center. The central piping of the heating system is referred to as the flow center and also as the Primary Loop.

FC Cool – a temperature sensor positioned on the flow center plumbing immediately following the heat exchanger. See HX below.

FC Hot – a temperature sensor positioned on the flow center plumbing immediately following the boiler (or other fuel-based heat source).



Flow Meter – In systems with energy measurement capability, a flow meter is included on the primary loop. The flow is measured in gallons per minute.

Flow Meter Temperature – In systems with energy measurement capability, the flow meter also provides a temperature measurement.

Glycol Pressure – the pressure (relative PSI) of the glycol/water mixture in the system. Displayed only if there is a glycol pressure sensor included in the system.

Heat Dissipation – One mechanism of preventing glycol/water deterioration from panel overheating is to dissipate a small amount of heat in chosen zones before the panels get too hot. This is ‘heat dissipation’ and it happens almost exclusively in the late spring or early fall, if at all. Various indicators on tabs show which zones will participate in heat dissipation if dissipation is necessary. Actual dissipation is only occurring when the ‘Overtemp’ indicator is on (dashboard and detail tabs). See also ‘Overtemp’.

Hot Pipe (also referred to as the Solar Source) – the pipe that brings hot fluid from the solar collectors into the heating system. The hot pipe sensor is in the mechanical room of the building on the heating system plumbing.

HX – abbreviation for heat exchanger. Most systems include a heat exchanger to pass heat from the fluid circulating in the panels to the fluid circulating in the interior heating system without mixing the fluids themselves.

Hysteresis – Every turn on or off setpoint has hysteresis to prevent the rapid turning on and off of pumps, valves, etc. (short cycling). Hysteresis is the temperature gap which prevents the short cycling. For example, a normal thermostatic control may be set to 70F. When the measured temperature drops below 70F the system turns on. However, it does not turn off as soon as the temperature rises above 70F. If the hysteresis is set to 3F, then the heating continues until the temperature rises above 73F. Hysteresis is also referred to as ‘dead band’ in the industry.

ID – Each SLIC has a unique ID assigned to it by SolarLogic. The VSLIC and SolarLogic central server software use the SLIC ID for communicating the SLIC identity.

Last Update – the SLIC sends information to the SolarLogic central server (in cyberspace). When using the VSLIC interface software, the time indicated on the last update shows the last time the SLIC being monitored communicated with the central server. If you are monitoring a SLIC over the internet and the last update time is not approximately the current time, then the SLIC has not been communicating with the central server. If this condition does not remedy itself within 24 hours, the condition should be investigated.

Local Mode (on the Indoor Zones and Pool/Spa tabs) – The current Solar/Normal/Aux setting of the three position switch at the bottom of the SolarLogic thermostats. See **Manual Heating Control Using Room Thermostats** in the User’s Manual for details.

Manifold (A, B, C and G) temperature – space heating zones are typically grouped together into fluid distribution sub-systems called manifolds, with each manifold pumped by a single pump. The SLIC designates manifolds A, B and C as the indoor manifolds and manifold G as the outdoor manifold. On the detail tab, the temperature returning from each manifold sub-system is displayed.



Night Sky Radiant Cooling – circulating fluid through the masonry floors and solar panels at night to radiate heat out to the night sky through the panels. This cools the floors and lowers air conditioning needs.

Overtemp – flat plate solar panels in water/glycol systems need to be kept below certain temperatures to prevent deterioration of the glycol/water mixture. The 'Overtemp' indicator means that the SLIC system is running particular functions to keep the panels cool in order to prevent that condition from developing. It does not mean that the system is operating improperly or is overheating. The functions that the SLIC operates in this condition depend on the system design.

pH Sensor – In some systems, a pH (acidity) sensor is included in the circulating glycol/water fluid mixture. If the mixture becomes acidic (pH below 7.0), it is time to replace the glycol/water mixture.

PreHX – The 'PreHX' temperature measurement can represent two different positions in the primary loop: 1) If there is no energy measurement capability in the system, the PreHX temperature is on the primary loop, just before the heat exchanger. 2) If there is energy measurement in the system and a storage tank, the PreHX temperature is between the storage tank and the boiler.

Primary Loop – The plumbing system consists of a 'primary' loop of plumbing connecting a number of secondary loops. Each secondary loop is connected by two closely spaced pipe tees. The primary loop is the plumbing which moves heat from one secondary loop to another.

Secondary Loop(s) – See also 'Primary Loop'. Each secondary loop moves heat in or out of a heat load or heat source. Secondary loops are connected to the primary loop and to the DHW tank, boiler, storage tank, zone manifold(s) or heat exchanger.

Setback Groups – Programmability of the SolarLogic thermostats is provided in groups. Each group has four time periods and an offset to the physical thermostat settings in each time period. Any thermostat can belong to Group A, Group B, or No Setback. See Setback Groups in the manual for further explanation and examples.

Solar Available – when the 'solar available' indicator is lit, it means that the fluid coming from the solar panels is hot enough to perform heating tasks. There are solar available indicators on the dashboard and the solar available tabs on the VSLIC. The indicator on the dashboard is for zone heating. On the solar available tab, there are individual indicators for the various heating tasks.

StO – abbreviation for storage tank. Many solar heating systems include a heat storage tank as part of the interior plumbing.

Two-Stage Heating – Heating water or living spaces with two sources of heat (solar and fuel-based) which are separately controlled to create fuel savings by first using free, solar heat when available. A more detailed explanation is in the manual on the Indoor Zones tab description.

Valve Error – if a zone valve does not open within a set period of time after it has been energized, a 'valve error' is flagged. This is an indication that the valve is malfunctioning.

Water Pressure – The pressure (relative PSI) of the boiler fluid in the system. Displayed only if there is a water pressure sensor included in the system.



White Plate – a temperature sensor on a metal plate facing the night sky which is used to control night sky radiant cooling.

Whole House Mode (override) – Thermostatic control of room heating can be 'Normal', 'Solar (only)', and 'Auxiliary' according to the three-position switch on each room thermostat. Alternatively, the entire house space heating can be placed in one of the three modes from the dashboard. If the Whole House Mode is either solar or auxiliary, it overrides the switch setting on the physical thermostats. A more detailed explanation is in the manual on the Indoor Zones tab description.

